

QNAP



QRM+ Explained

Use Your Smartphone to
Remotely Manage
**Networked Computing
Devices**

04/23 QRM+ LIVE BROADCASTING

- 1 **QRM+ Introduction**
- 2 **How to Use QRM+ with QGD-1600P**
- 3 **QRM+ Application Instructions:**
Using QGD-1600 as a server and manage end-devices

**One-key
Installation,
Complete Your
Management
Requirement of
End-devices**

**“ How to Monitor
Various Computer
Facilities and Cloud
Virtual Machine
Status Immediately
when You are Not
Beside the Machine
Room ? ”**

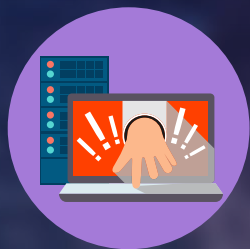
— IT Manager



Market Comparison Analysis

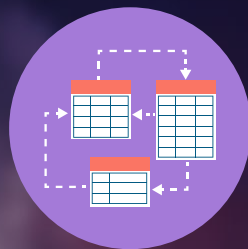
	QNAP	Data Center SNMP-based CMS	Cloud CMS
Product	QRM+	Teamviewer/Spiceworks/SolarWinds/	Spiceworks/WhatsUp Gold
Support end OS	Windows/Linux/IPMI	Windows/Mac OS X/Linux/Unix	Windows/Linux
Price	Free	Free/By year	Free/By device number
Operation	One key-press, Friendly user interface, Easy to use	Commercial advertising, Complicated user interface	Easy to setup
Control Center	Private	Private	Public

QRM+ Solve Your Requirement of Managing Devices



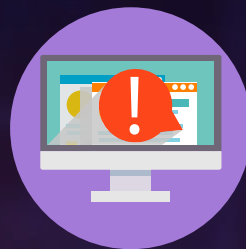
Remotely manage devices

- CPU usage
- Memory usage
- Hardware usage
- Network usage
- Power state control



Data collection & analysis

- Collect problems



Root cause analysis

- Problem analysis
- Crash recovery



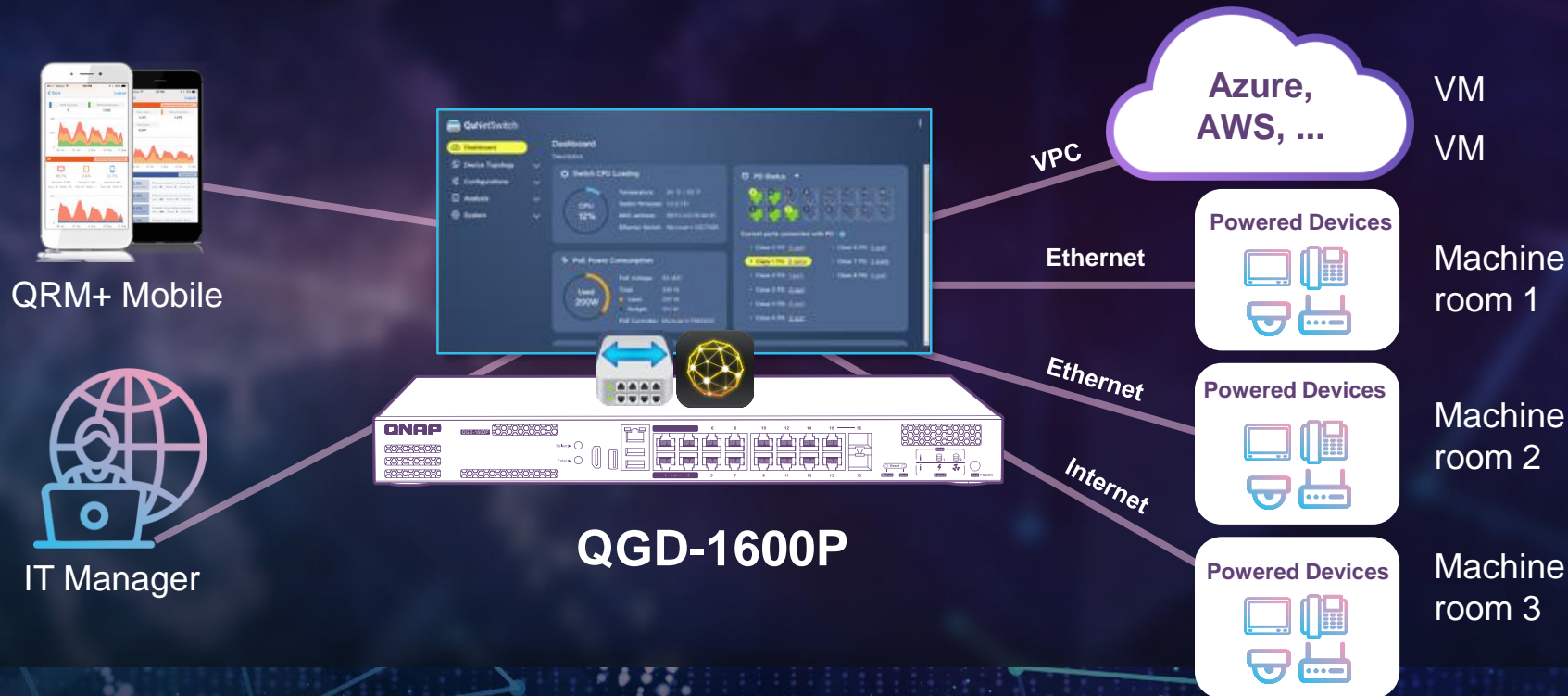
On-site maintenance

- Preventive maintenance
- Equipment improvement

QRM+ Introduction



Using QRM+ Operator Can Control Multiple Clouds & Devices



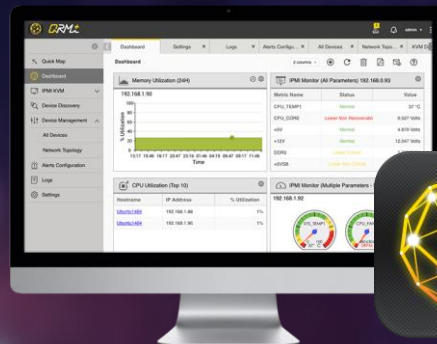
What is Centralized Management (QRM+)?



QRM+ Simplifies Your Devices Management Workflow

QNAP

Add devices



Comprehensive
QRM+ Device
Monitoring

Continuous
Monitoring

- Data collection
- Dashboard
- Network topology

Troubleshooting

- Support IPMI
- Web-based remote access

Analysis

- Historic data
- Remote recording and playback

Issue
Prevention

- Alert and notification
- Log Management

Management of Different Equipment



- Windows 7, 8, 10
- Windows Server 2003, 2008, 2012
- Windows Vista
- Windows XP
- All platforms



- Ubuntu
- CentOS
- Debian

IPMI

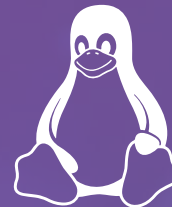
- Support IPMI 1.5/2.0
- Support KVM over IP
 - Supermicro IPMI
 - IEI IPMI

Lightweight Agent - QRMAgent

- QRM+ server monitors and controls all the devices with QRMAgent
- Provides convenience and security for automatic deployment or remote configuration



**Supports Windows
and Linux devices**



Supported Versions of QRMAgent

HW Architecture / OS

Supported versions

x86 - Windows

Windows XP/Vista/7/8/8.1/10, Windows Server
2003/2008/2012

x86-64 - Windows

Windows Vista/7/8/8.1/10, Windows Server
2003/2008/2012/2016

x86-64 - Linux

Ubuntu 12/14/16, Debian 8, CentOS 6/7

How to Use QRM+ with QGD-1600P



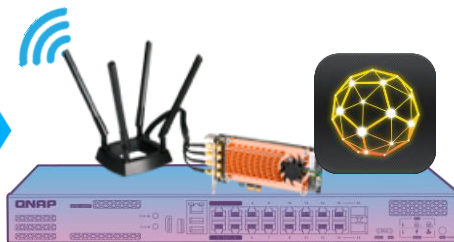
QGD Solves Deployment Requirement of Your Terminal-equipment

QRM+ mobile



Centralized Management

QGD-1600P



Terminal/virtual equipment

Industrial Panel PC



QRMAgent



QRMAgent



QRMAgent

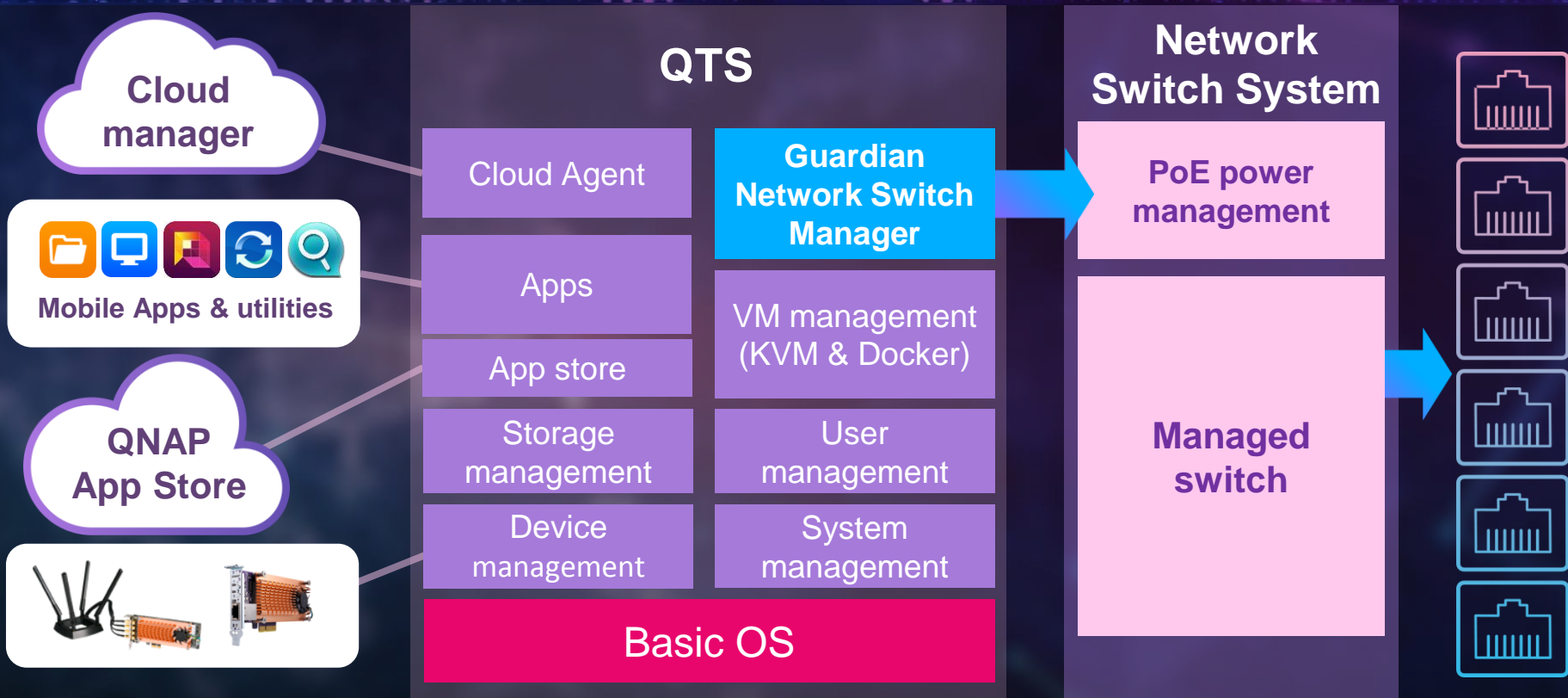


Cloud

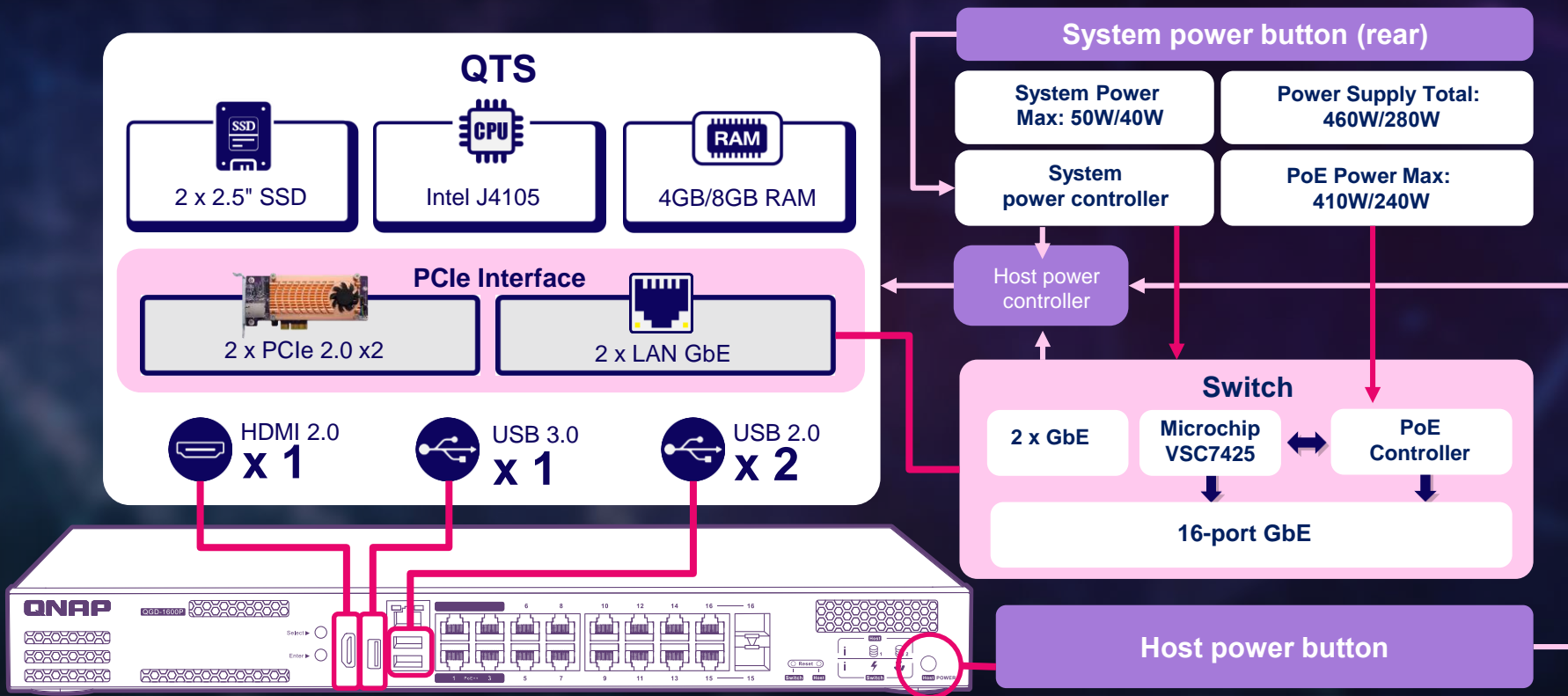


QRMAgent

What is Guardian QGD-1600P?



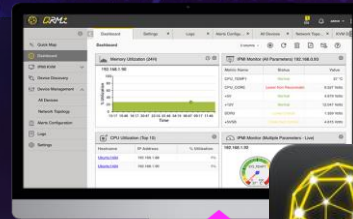
Guardian QGD-1600P- Hardware Diagram



Advantages of Using QRM+ & QGD-1600P

- Unrestricted device location
- Strengthen management of network equipment (IP camera) and powered device (Panel PC)
- Reduce the risk of power supply
- Reduce cost of operational maintenance
- Suitable for a variety of places (factories, hospitals, machine rooms) and other network management complex areas

- Integrates NAS, managed switch, and Power over Ethernet (PoE)
- Support various QNAP applications



Through QRM+
to monitor

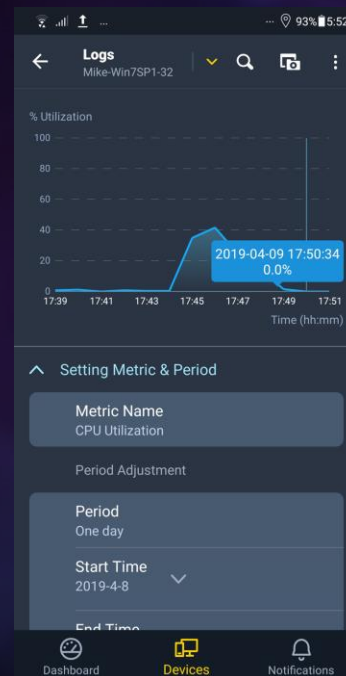
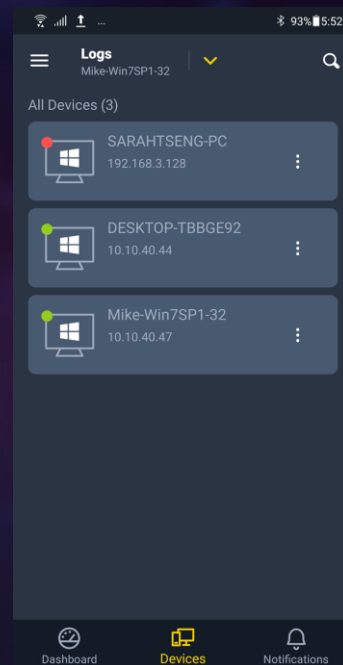
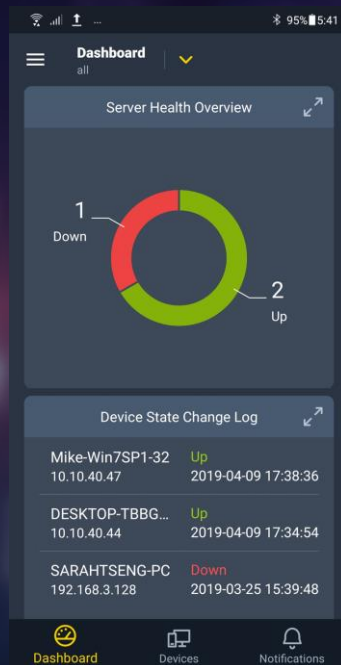


Powered devices

IEEE 802.3bt
- Power level up to 90W

QRM+ Mobile

QRM+ Mobile is a **centralized remote management application** that allows you to manage and monitor networked devices using your mobile device.



QRM+ Application Instruction

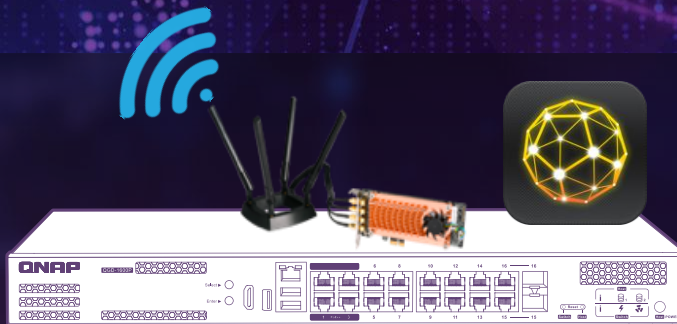
Using QGD-1600P as a
server and manage
end-devices



Install QRM+ in QGD-1600P

1

Install QRM+ in QGD-1600P with QNAP QTS 4.4.1



QNAP QTS System

- Intel® Celeron® J4105 Processor
- 4GB RAM
- USB 3.0 x 1
- USB 2.0 x 2
- Two SATA 2.5-inch drive bays
- PCIe slot x 2 : Supports QM2 expansion and wireless cards
- HDMI x1: View live recordings via HDMI-out

Add Devices to QRM+

2

To scan a specific IP range and add devices to QRM+

The screenshot shows the QRM+ web interface. The top navigation bar includes tabs for Dashboard, System Manager, KVM Dashboard, All Devices (selected), and KVM Playback. The main content area is titled 'Device Management / All Devices'. On the left, a sidebar menu under 'My Network' shows a tree structure with '192.168.0.0/24 (7)' selected. The main table displays a list of devices discovered on this network.

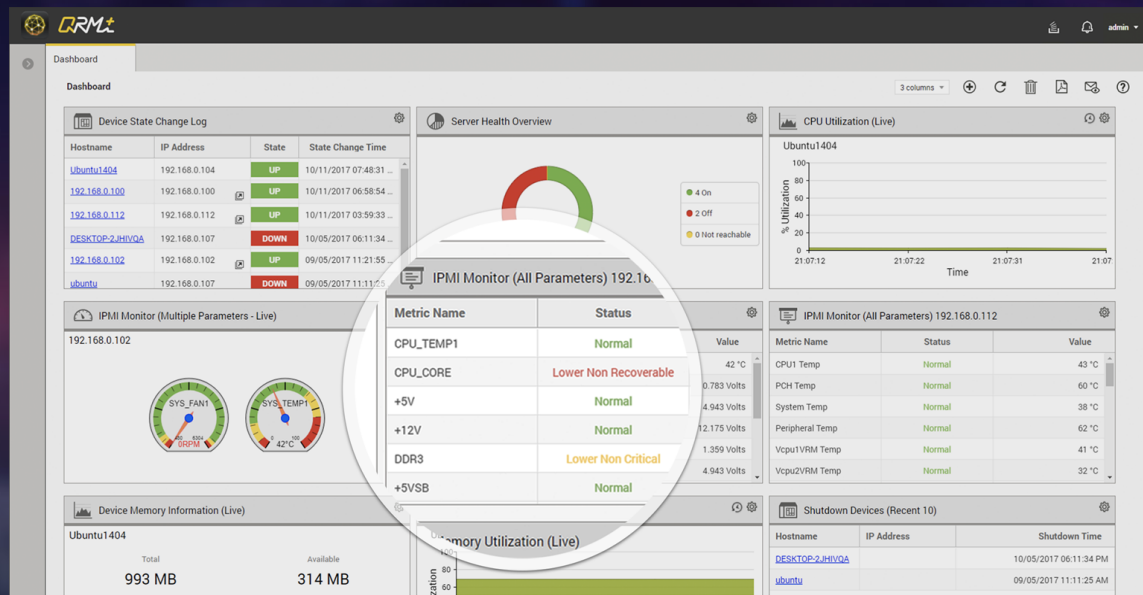
Device Tag	Managed by	Brand	Operating Syst...	Role	Status
HQ 5F	QRMAgent	Bochs	Ubuntu	Device	Monitored
CN 6F	IPMI	IEI Technology ...	IPMI Manageme...	Device	Monitored
SG 3F	QRMAgent	Bochs	Microsoft Windo...	Device	Monitored
	QRMAgent	QEMU	Microsoft Windo...	Device	Monitored
	QRMAgent	QEMU	Ubuntu	Device	Monitored
US 2F	IPMI	Supermicro	IPMI Manageme...	Device	Monitored
US 3F	IPMI	IEI Technology ...	IPMI Manageme...	Device	Monitored

Device Data Collection

3

Manager install QRMAgent to your device first, agent can filter data before sending back.

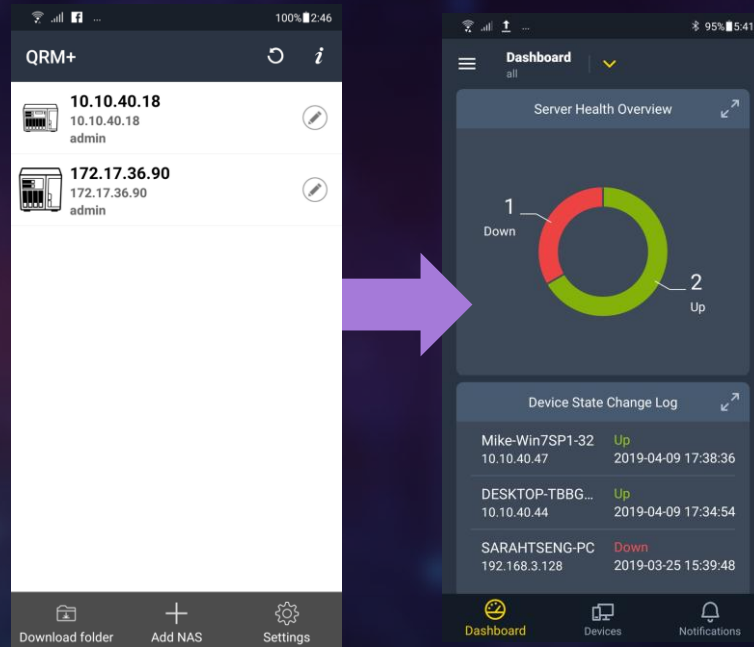
Using Dashboard to overview the device status.



QRM+ Mobile, Speed Up Management Devices

4

Manager install QRM+ mobile and add NAS to monitor your devices immediately.



QRM+ Requirements

1

X86-based NAS

(Intel and AMD processor)
requires a minimum of 4 GB
RAM and QTS 4.3.x
(or later).

2

ARM-based NAS

(64-bit)
requires a minimum of 4 GB
and QTS 4.3.4 (or later).

QRM+ Centralized Management Solution

Solve Your Machine Room Devices by Single Clicking

**Install QRM+ to Start
Your Remote Management**



QRM+



QRM+ mobile

The QNAS logo is displayed in a bold, white, sans-serif font. The letter 'Q' is stylized with a small horizontal bar at its base. The background of the entire advertisement features a dark blue space with a faint, glowing globe and a complex network of blue and purple lines and dots, suggesting a global network or data flow.

QNAS



QRM+

is Your Best Choice!

Copyright © 2019 QNAS Systems, Inc. All rights reserved. QNAS® and other names of QNAS Products are proprietary marks or registered trademarks of QNAS Systems, Inc. Other products and company names mentioned herein are trademarks of their respective holders.