

TS-x53D

The Intel® quad-core 2.5GbE NAS with HDMI and PCIe expansion for 10GbE, Wi-Fi 6, or M.2 SSDs

With latest QTS 4.4.2 O.S.



TS-453D



x 2

Read: **590** MB/s, Write: **535** MB/s



J4125 4-core 2.0 GHz,
up to 2.7 GHz



TS-653D



TS-253D

QWA-AC2600

QM2-2S-220A





The illustration depicts a blue biplane in the upper left corner, dropping three light blue parachutes. Below the parachutes, three QNAP Network Attached Storage (NAS) units are shown on a stylized landscape of brown and teal hills. The units are labeled TS-253D, TS-453D, and TS-653D. The TS-253D is a small, black, rectangular unit. The TS-453D and TS-653D are larger, black, rectangular units with a front panel featuring a QNAP logo, a power button, and several status LEDs. A large yellow speech bubble in the upper right corner contains the text '2.5GbE NAS is inevitable'. To the right of the speech bubble, three bullet points are listed, each preceded by a yellow vertical bar. The background is a dark grey gradient.

2.5GbE NAS is inevitable

2.5GbE is gaining popularity

**2.5GbE TS-x53D NAS series
with PCIe expandability**

**Advanced apps
for SOHO and SMBs**

The 20-year-old 1GbE is getting slow. Now newer motherboards are equipped with 2.5GbE!

- Asus ROG MAXIMUS XII EXTREME



- Gigabyte Z490 AORUS MASTER



- MSI MEG Z490 ACE



- Asrock Z490 Taichi



● Wi-Fi 6 routers with 2.5GbE WAN/LAN port

When you upgrade to a Wi-Fi 6 router with 2.5GbE WAN/LAN, and if the router's 2.5GbE interface is set to a LAN port, a 2.5GbE NAS is best for the multiple clients of Wi-Fi 6 wireless and GbE wired access to efficiently utilize the full 2.5GbE bandwidth!

TP-Link
TL-XDR6060



Asus
AX6600M



Netgear
RAX120



● With the same LAN cable, 2.5GbE switch for multi-device environment

Multiple QNAP switches supporting 2.5GbE

Coming 2020 Q3!



QSW-1105-5T (Unmanaged)

5 x 2.5G

RJ45 Multi-Gig

Fanless & metal housing



QSW-1208-8C (Unmanaged)

8 x 10G/5G/2.5G

RJ45 Multi-Gig



QSW-308-1C (Unmanaged)

1 x 10G/5G/2.5G

RJ45 Multi-Gig



QSW-M408-4C (Managed)

4 x 10G/5G/2.5G

RJ45 Multi-Gig



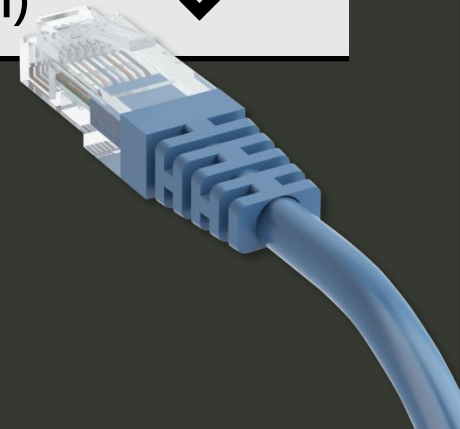
QSW-M408-2C (Managed)

2 x 10G/5G/2.5G

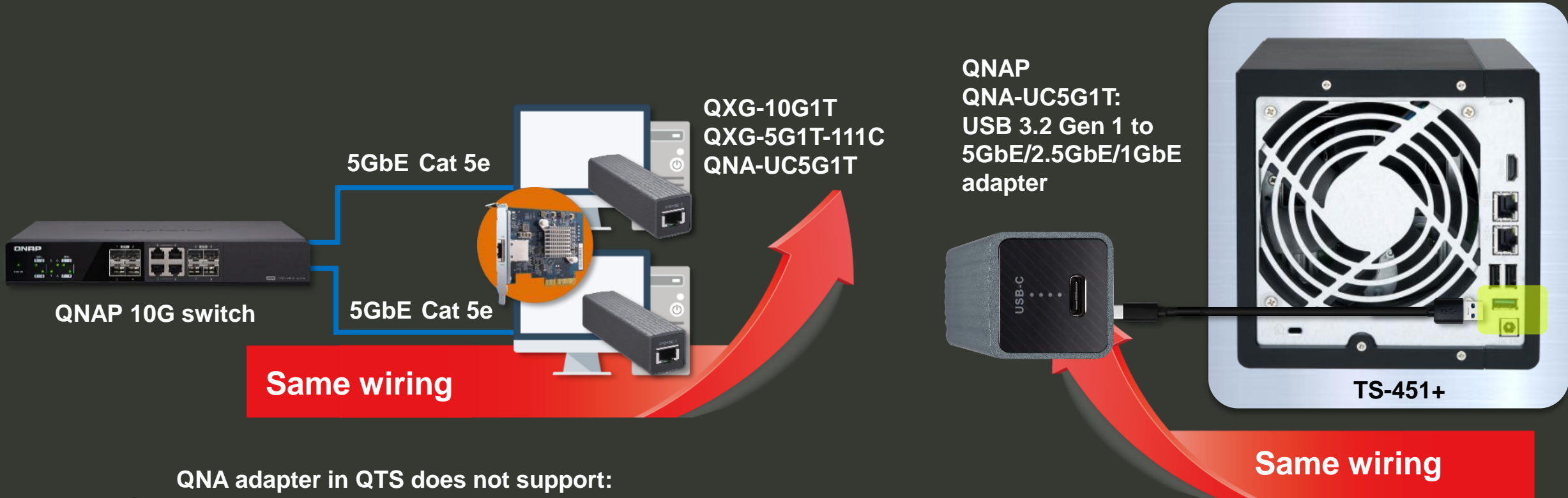
RJ45 Multi-Gig

Use the existing wiring infrastructure to support 2.5GbE

	CAT 5e	CAT 6	CAT 6A
100M	✓	✓	✓
1G	✓	✓	✓
2.5G	✓	✓	✓
5G	✓	✓	✓
10G	X	✓ (55m)	✓



● QNAP 10GbE/5GbE accessories for PC / Server / NAS to get 10GbE/5GbE/2.5GbE via PCIe or USB



QNA adapter in QTS does not support:
Port trunking (LACP) / DHCP server
RADVD server / static route



Storage is also after higher speed! Dual 2.5GbE TS-x53D NAS for large file transfer and intensive access

No more bandwidth restriction by 1GbE interface on NAS! No more DIY to install the 2.5GbE driver to your other brand NAS!! TS-x53D NAS is built in with 2 independent 2.5GbE NICs for faster and smoother multi-device networking experience.



iSCSI 2.5GbE connection

Save space in your laptop with the large capacity NAS for more games and applications.



Lower NAS CPU utilization

Better TCP & UDP for more users



● TS-253D, TS-453D, TS-653D front view



Power button

LED indicators with adjustable brightness:
Status, LAN, Drive, USB Copy

2/4/6 x SATA 6Gb/s
3.5"/2.5" HDD/SSD

Lockable magnetic cover

USB 3.2 Gen 1 port

Copy button

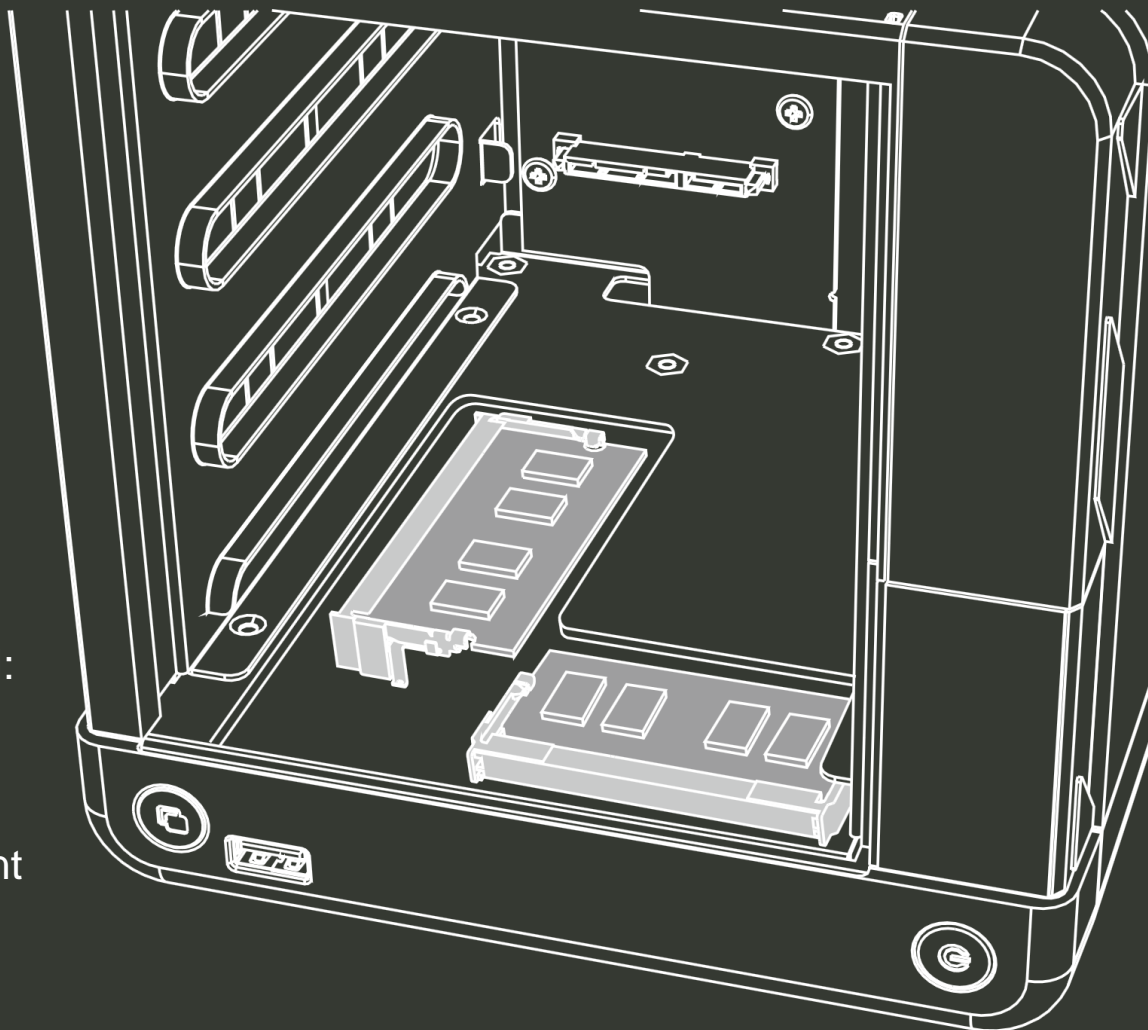


8GB memory for multi-tasking and multi-client access



Dual channel

- 2 x DDR4 2400 MHz SO-DIMM slots for max 8 GB (2 x 4 GB)
- Optional 4GB RAM module (P/N: RAM-4GDR4K0-SO-2666) for 4GB models to become 8GB for higher performance in multi-client and multi-app environment.



NAS Models

TS-253D-4G

4 GB RAM (1 x 4 GB)

TS-453D-4G

4 GB RAM (1 x 4 GB)

TS-453D-8G

8 GB RAM (2 x 4 GB)

TS-653D-4G

4 GB RAM (1 x 4 GB)

TS-653D-8G

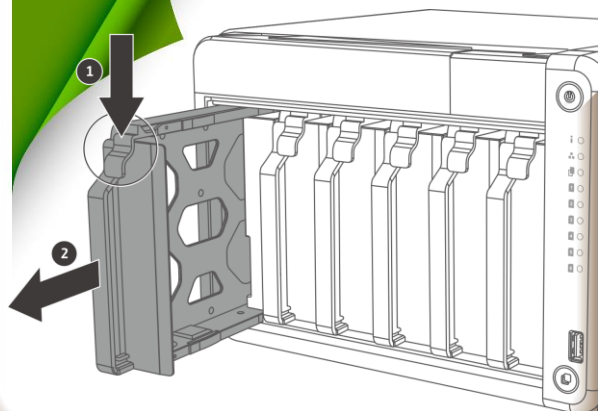
8 GB RAM (2 x 4 GB)



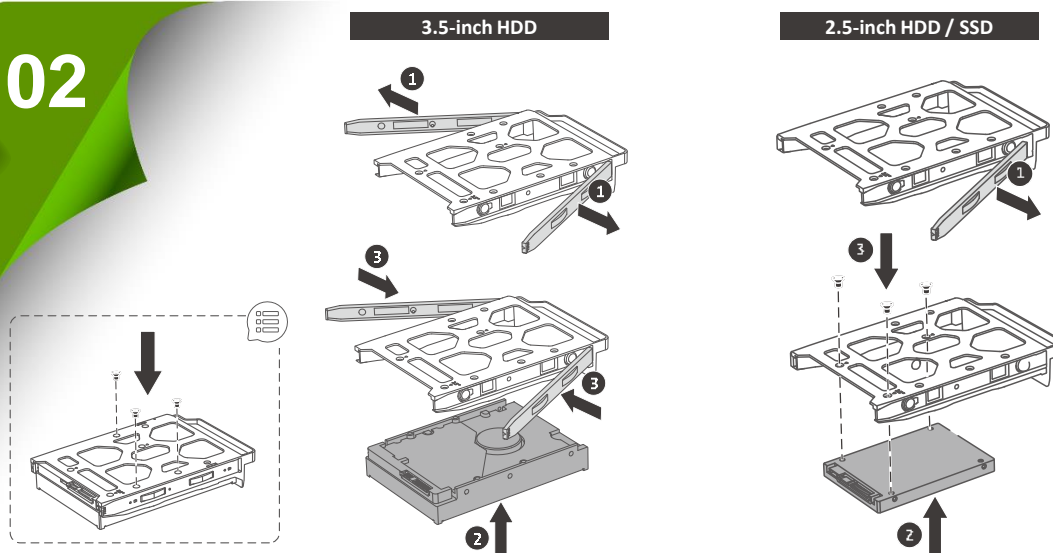
● Easy to install HDDs and SSDs

Install 3.5-inch drives without tools

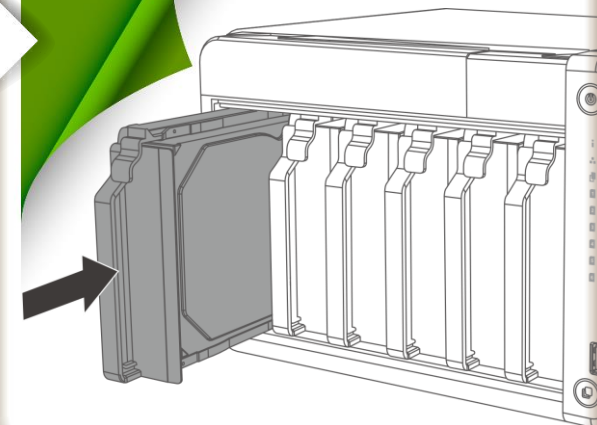
01



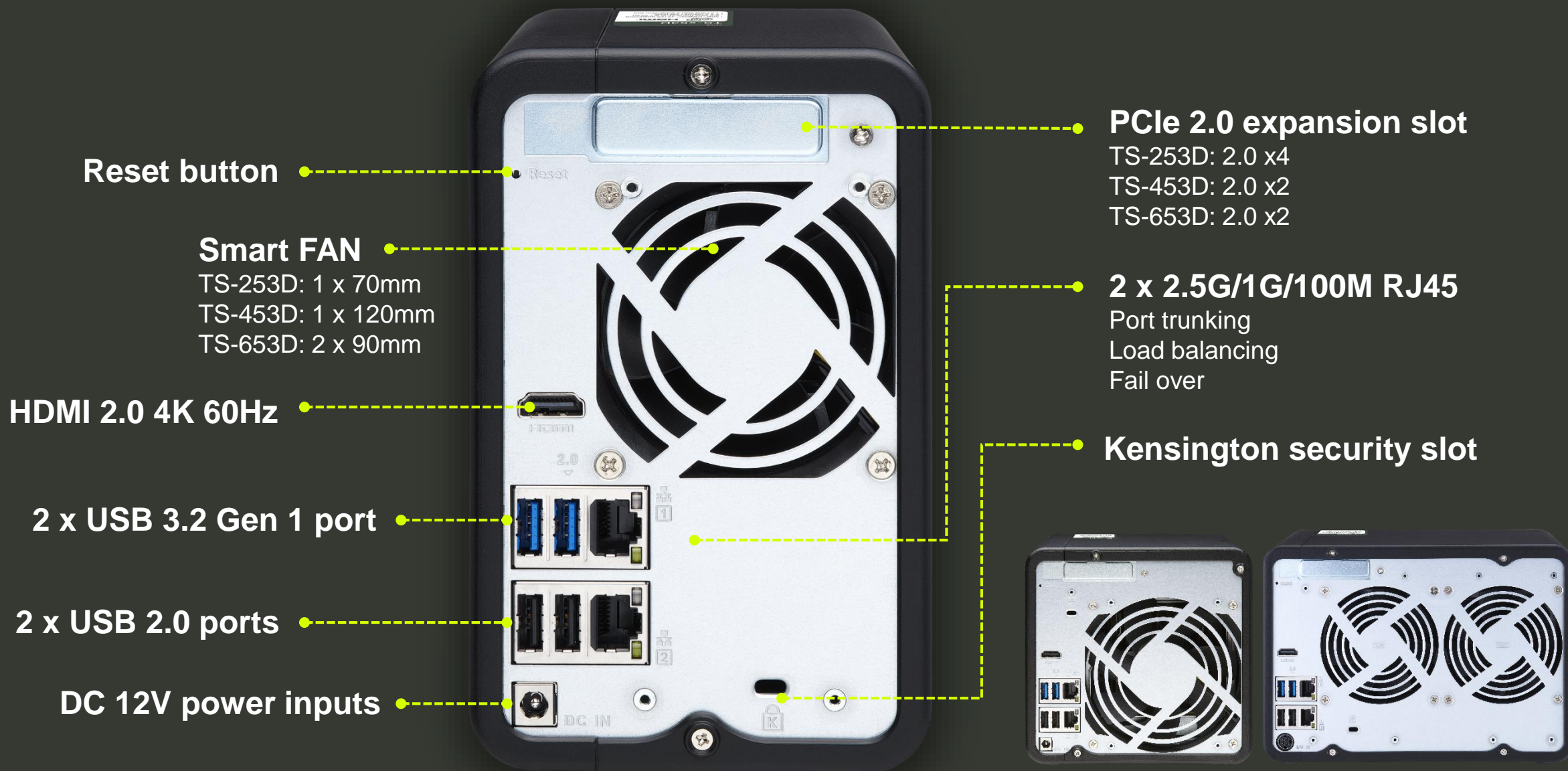
02



03



● TS-253D, TS-453D, TS-653D rear view



● Latest Gen Intel J4125 4-core 2.0GHz, up to 2.7GHz

Low-power J4125

Intel UHD Graphics 600



2.0 GHz base

2.7 GHz burst

250 MHz base

750 MHz burst



Embedded low-power 10W TDP quad-core Intel J4125 CPU

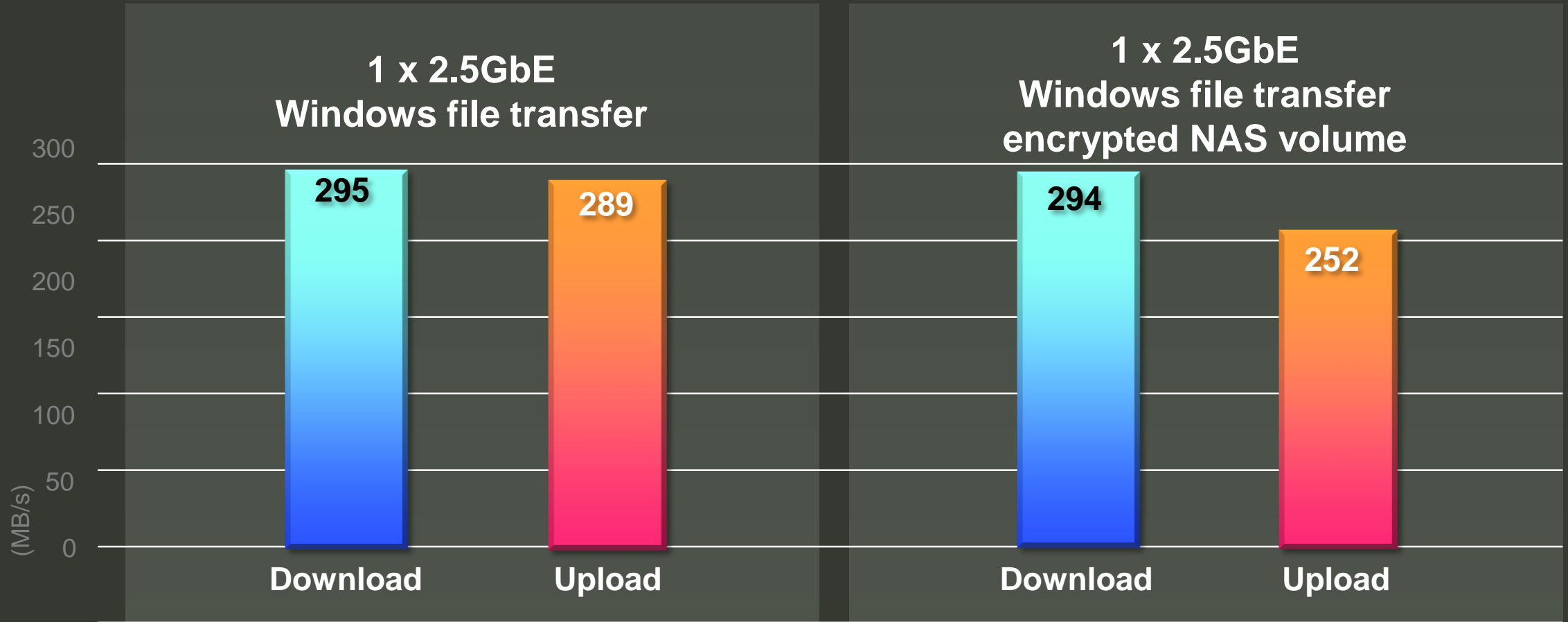


CPU model	J4125	J3455 (previous generation)
Launch date	Q4'19	Q3'16
Cores	4	4
Threads	4	4
Base frequency	2.0 GHz	1.5 GHz
Burst frequency	2.7 GHz	2.3 GHz
Cache	4 MB	2 MB
Memory	DDR4 (2400 MHz)	DDR3L (1866 MHz)
Built-in Graphics	Intel UHD Graphics 600	Intel HD Graphics 500
4K 60Hz support	60Hz (HDMI 2.0)	30Hz only

Source
<https://ark.intel.com>



2.5GbE accelerates large file transfer than 1GbE, suitable for a single client computer/server environment



Tested in QNAP Labs. Figures may vary by environment.

Test environment:

NAS | TS-453D-4G, QTS 4.4.2, 4 x Samsung 850 Pro 1TB SSDs, RAID 5, thick volume

Client PC | Windows 10 Pro, Intel Core i7-6700 3.4 GHz, 32GB RAM

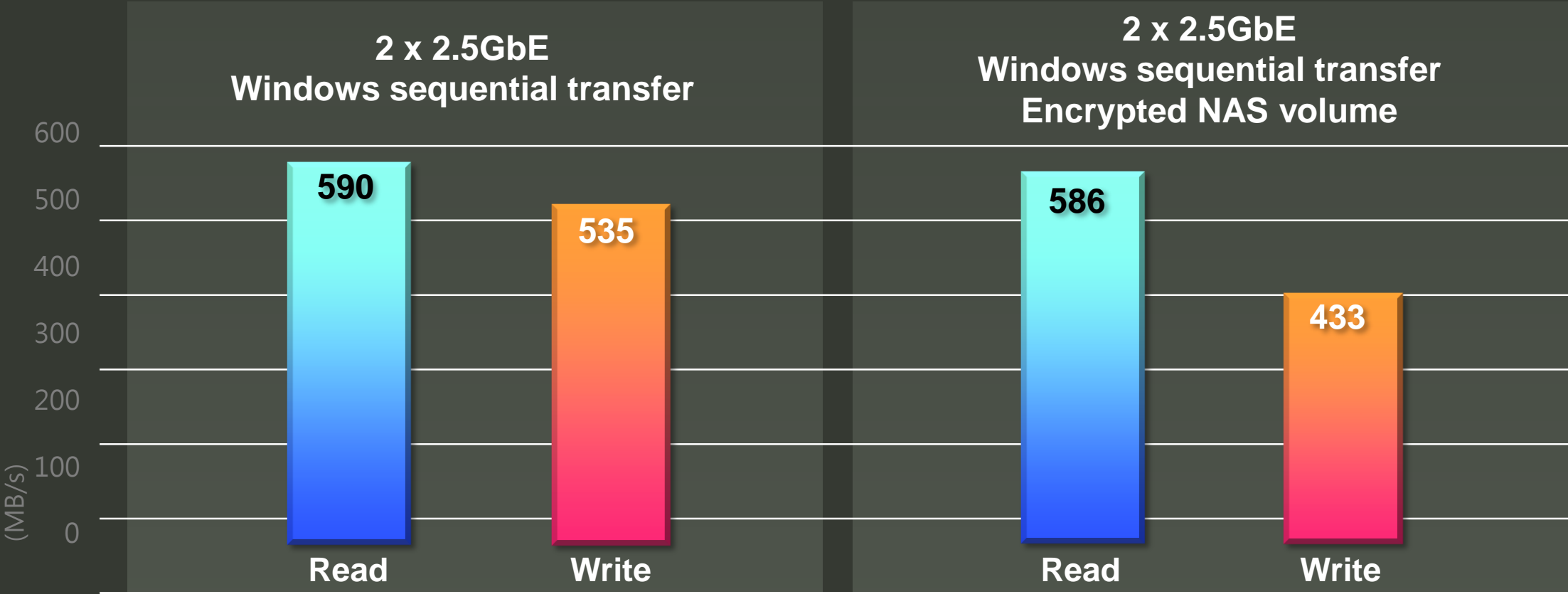
IOmeter | RAM*4, 30-sec ramp up time, 3-min seq. run time, 2 workers, 64-outstanding





2 x 2.5GbE for the multi-user/device environment for the future growth

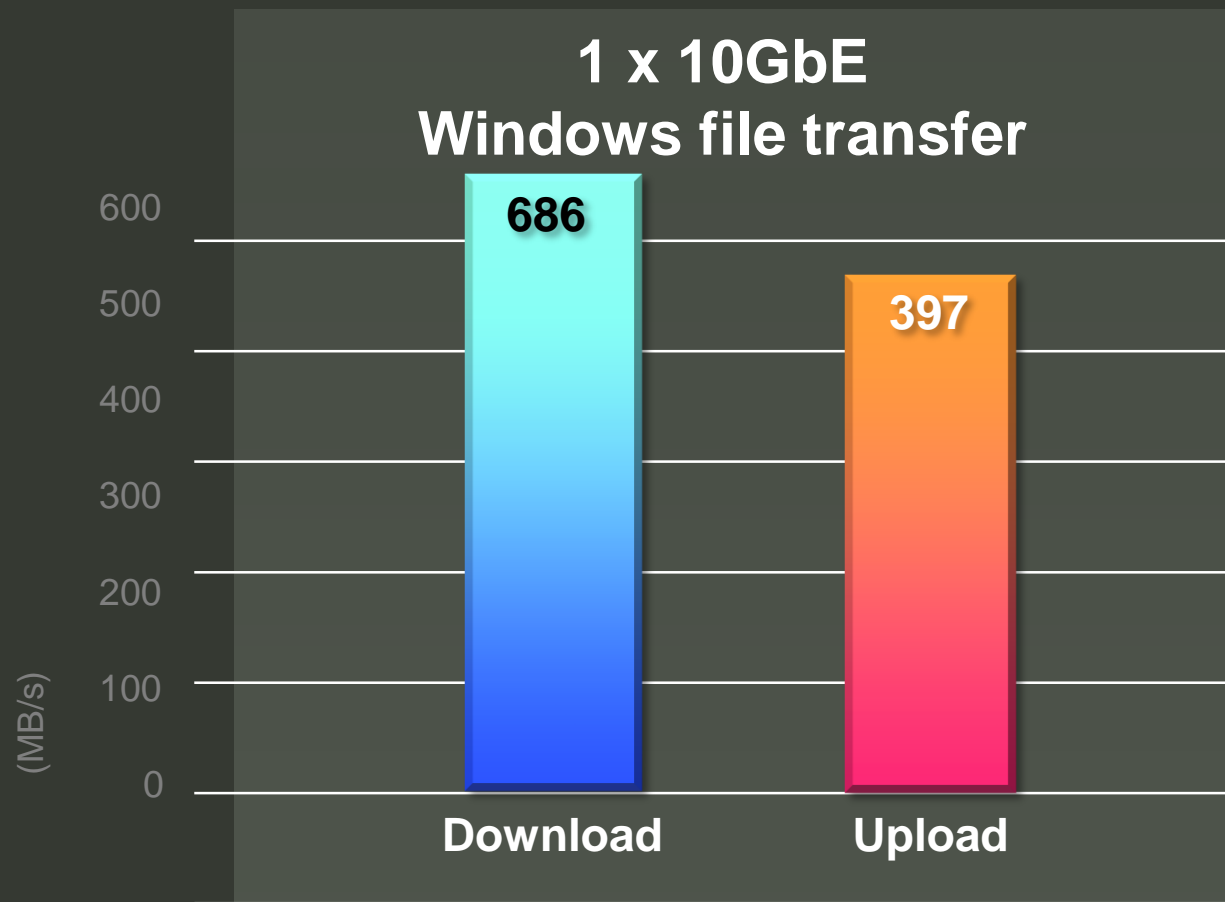
In addition to Jumbo Frame support, port trunking / link aggregation provides enhanced performance.



Tested in QNAP Labs. Figures may vary by environment.
Test environment:
NAS | TS-453D-4G, QTS 4.4.2, 4 x Samsung 850 Pro 1TB SSDs, RAID 5, thick volume
Client PC | Windows 10 Pro, Intel Core i7-6700 3.4 GHz, 32GB RAM
IOmeter | RAM*4, 30-sec ramp up time, 3-min seq. run time, 2 workers, 64-outstanding



● PCIe 2.0 slot for various 5GbE & 10GbE PCIe NICs



Tested in QNAP Labs. Figures may vary by environment.

Test environment:

NAS | TS-453D-4G, QTS 4.4.2, 4 x Samsung 850 Pro 1TB SSDs, RAID 5, thick volume

Client PC | Windows 10 Pro, Intel Core i7-6700 3.4 GHz, 32GB RAM

IOmeter | RAM*4, 30-sec ramp up time, 3-min seq. run time, 2 workers, 64-outstanding

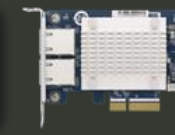
QXG-5G1T-111C

1 x 5G/2.5G/1G/100M



QXG-5G2T-111C

2 x 5G/2.5G/1G/100M



QXG-5G4T-111C

4 x 5G/2.5G/1G/100M



QXG-10G1T

1 x 10G/5G/2.5G/1G/100M



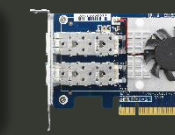
QXG-10G2T-107

2 x 10G/5G/2.5G/1G/100M

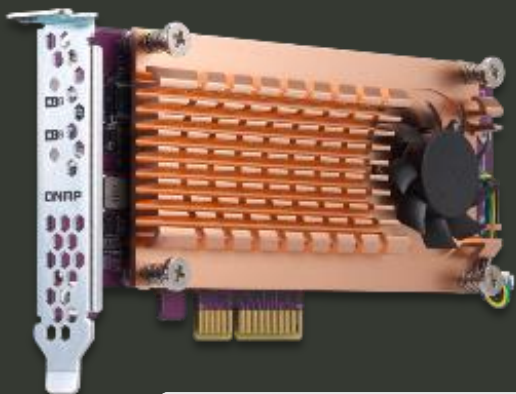


QXG-10G2SF-CX4

2 x 10G SFP+



Add two M.2 SSDs with a QM2 PCIe adapter and use SSD cache to enhance IOPS and performance of processing small files



QM2-2S-220A

2 x M.2 SATA 6Gb/s



QM2-2P-244A

2 x M.2 NVMe PCIe Gen2

QM2-2S-10G1TA

2 x M.2 SATA 6Gb/s

1 x 10G/5G/2.5G/1G

QM2-2P10G1TA

2 x M.2 NVMe PCIe Gen2

1 x 10G/5G/2.5G/1G

Storage & Snapshots

Storage & Snapshots

Overview

Storage

Snapshot

Storage

Disks/VJBOD

Storage/Snapshot

Cache Acceleration

External Storage

Snapshot Backup

Snapshot Replica

Snapshot Vault

iSCSI

iSCSI Storage

Remote Disk

LUN Backup

Cache Acceleration

ON

Usage

Allocated: 0 % Free: 100 %

Service: Enabled

Capacity: 108.64 GB

Cache Type: Read-Write

Cache RAID: RAID 1

Read Hit Rate: 0 %

Write Hit Rate: 97 %

Cache Flushing: --

Status: Ready

Hit Rate History

Create Remove Add SSD Set Caching Storage

Name/Alias	Capacity	Status
DataVol1	245.44 GB	Ready
DataVol2	688.37 GB	Ready
DataVol3	688.37 GB	Ready
DataVol4	693.84 GB	Ready
DataVol5	688.37 GB	Ready
DataVol6	325.27 GB	Ready

Wi-Fi 6 enhances wireless network speed and density

AP

Ruckus
R750



Aruba
550



Extreme Networks
AP305C



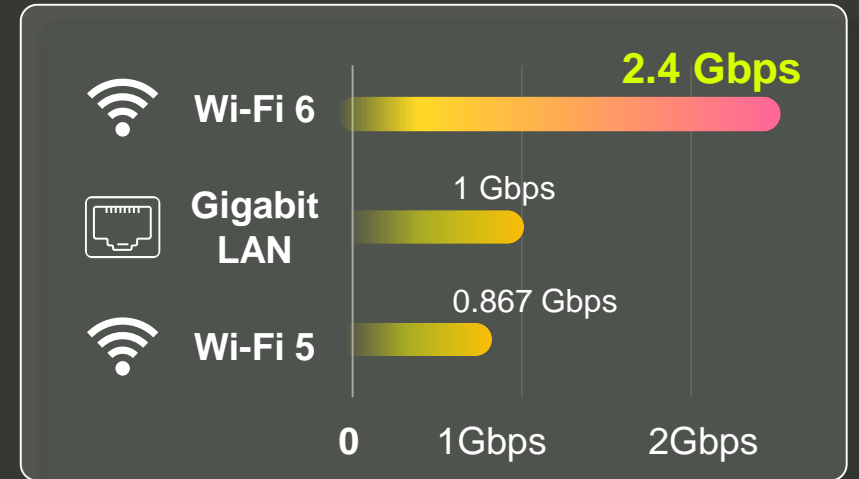
Computers

PCIe & CNVi NICs



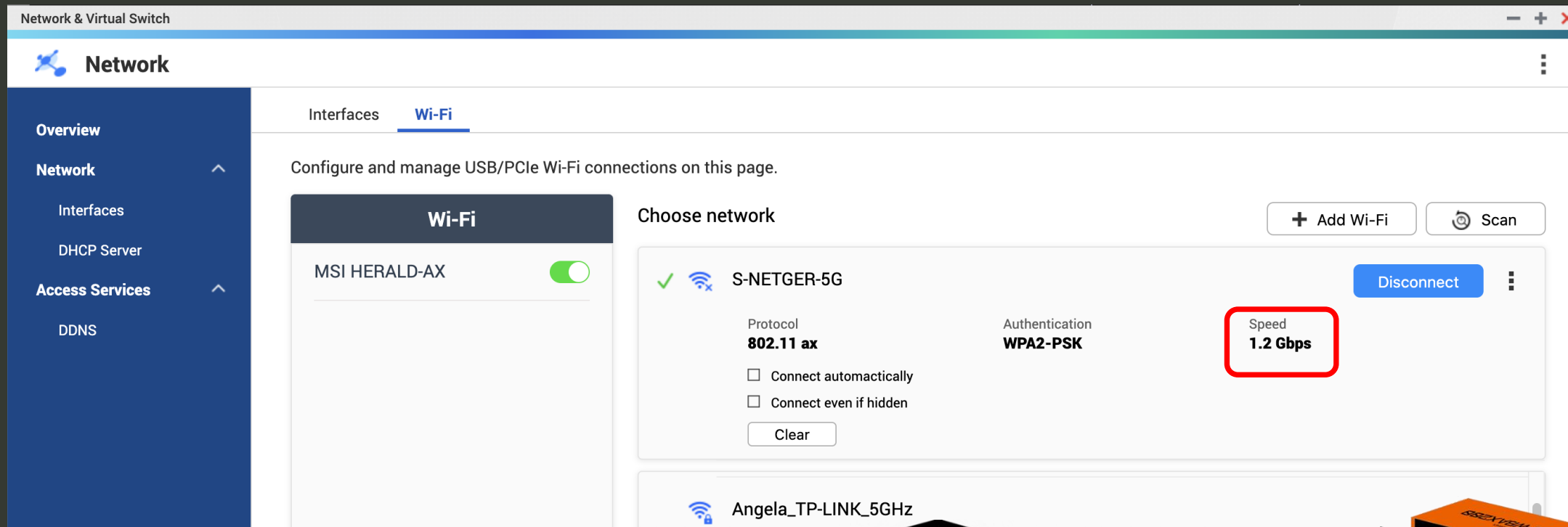
Mobile

iPad Pro, iPhone 11, Galaxy S20 series





NAS supporting Wi-Fi 6 PCIe NIC to gain fast wireless transfer speed for anywhere placement



Support 802.11AX Wi-Fi 6 PCIe cards based on Intel AX200 chipset.

Gigabyte GC-WBAX200

ASUS PCE-AX58BT

MSI HERALD-AX



DEMO

TS-X53D





**Backup, share, and VM
applications all-in-one
NAS for professionals
and businesses**





QuMagie smart albums and accelerated AI classification

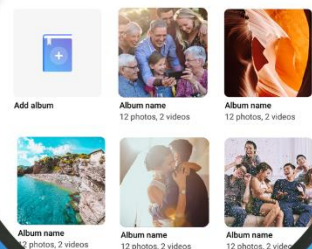
Organize photos with similar faces using facial recognition

Classify photos into 400 different themes using Subject Detection :
People, tags, dates, events, etc.

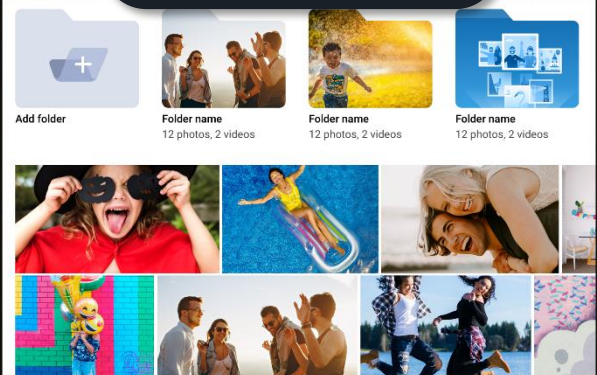


Album view

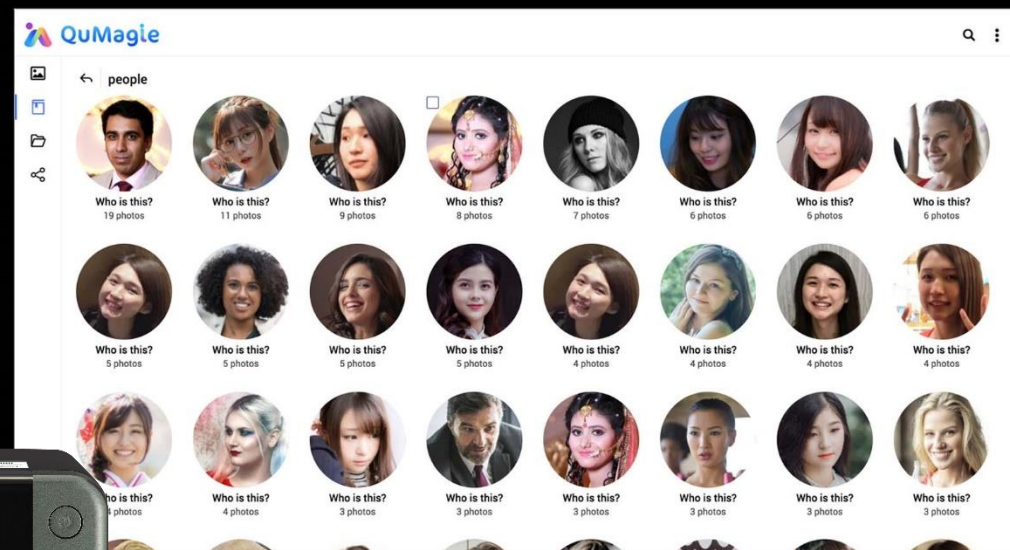
Albums



Folder view



TS-253D

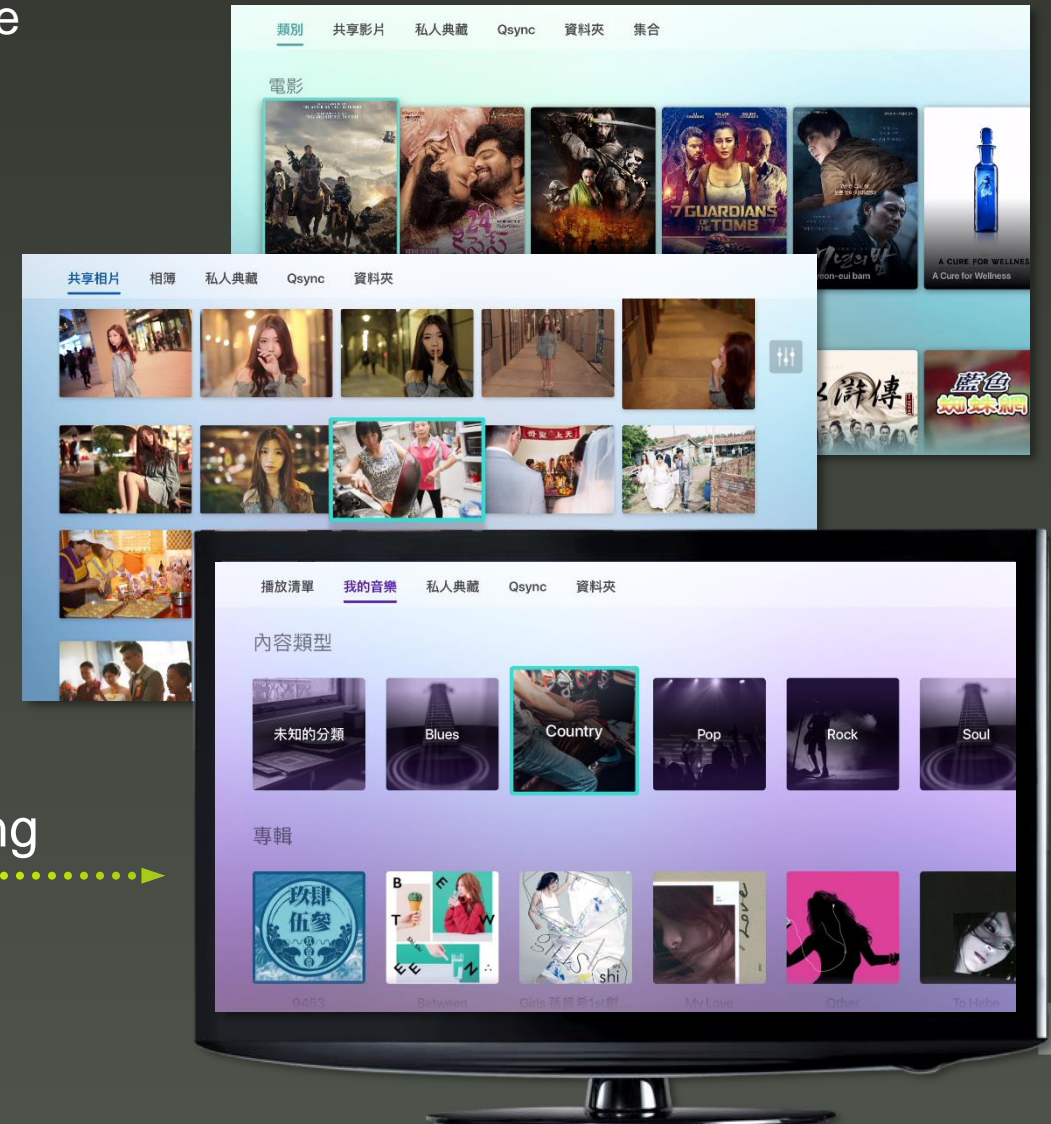


Stream to Smart TV, Apple TV, Chromecast, Fire TV & Roku

- Use the remote control of your media player to navigate
- Categorization and multiple sorting methods to enjoy your media content
- Filters and keyword searches to locate a file quickly



DLNA, network streaming





Full 4K UHD multimedia experiences



4K HDMI 2.0 60Hz output



Plex streaming & transcoding



**Use Cinema28 for
multi-room streaming**

With optional RM-IR004 IR remote control or
USB wireless keyboard and mouse



● Qsirch 4.0 makes it easy to search for files



- Search within NAS and on the Internet
- Large file preview pane
- Advanced search for complex keyword search
- 35+ powerful filter conditions
- Easy steps from previewing to sharing

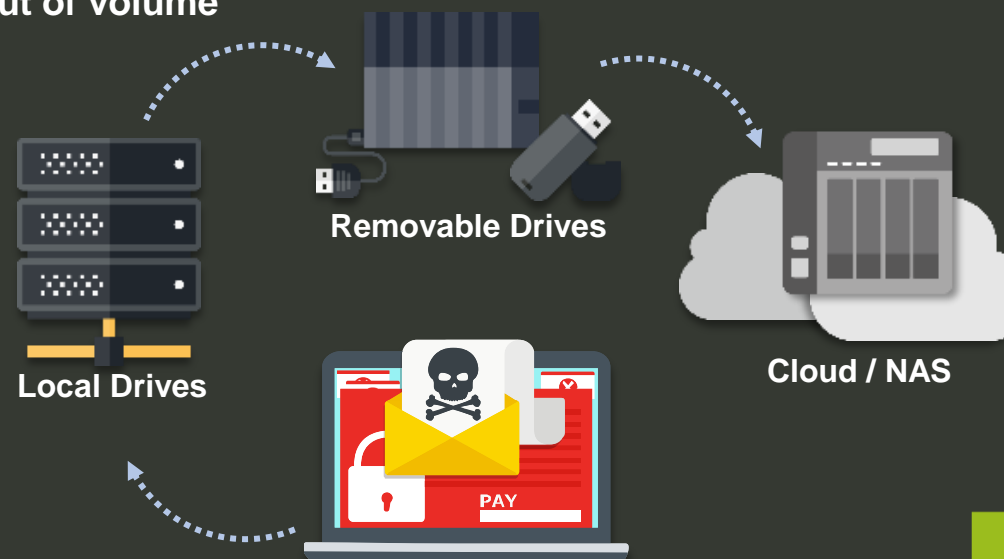
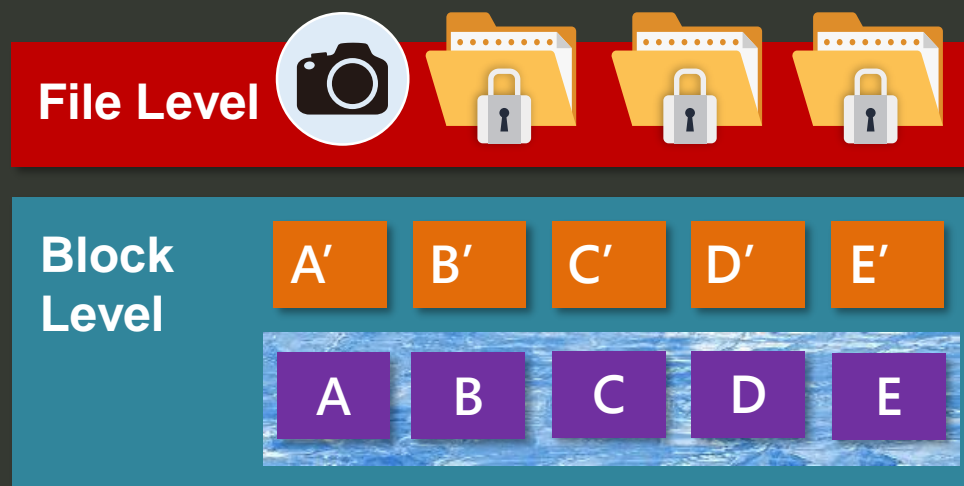


QNAP snapshot features for file recovery

1. Fully supports all storage configurations at the storage pool level.
2. Easily take, manage and restore snapshots.
3. Using the mature Ext4 file system for “out of volume” snapshots

RAM Size	Maximum Total Snapshot Number	Maximum Snapshot Number per Volume/LUN
4GB and more	1024	256

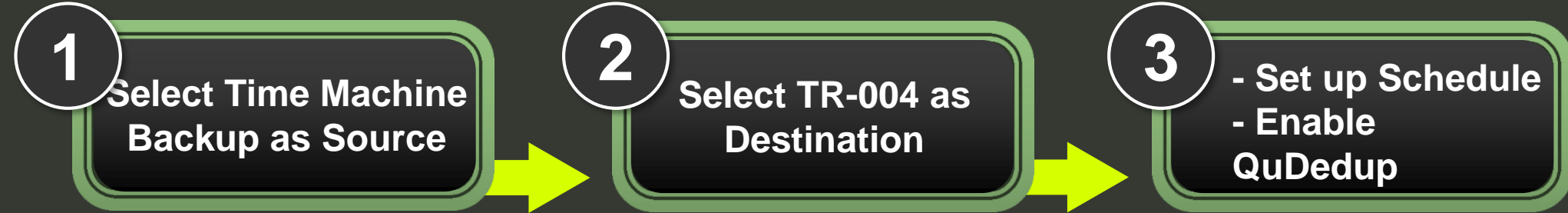
- Ransomware cannot overwrite snapshots which are stored out of volume



● Free macOS Time Machine backup

Copy Time Machine Backup file to NAS via HBS 3, and then synchronize the data from NAS to an external device or the cloud, eg. TR-004 USB RAID DAS

Create the backup job :

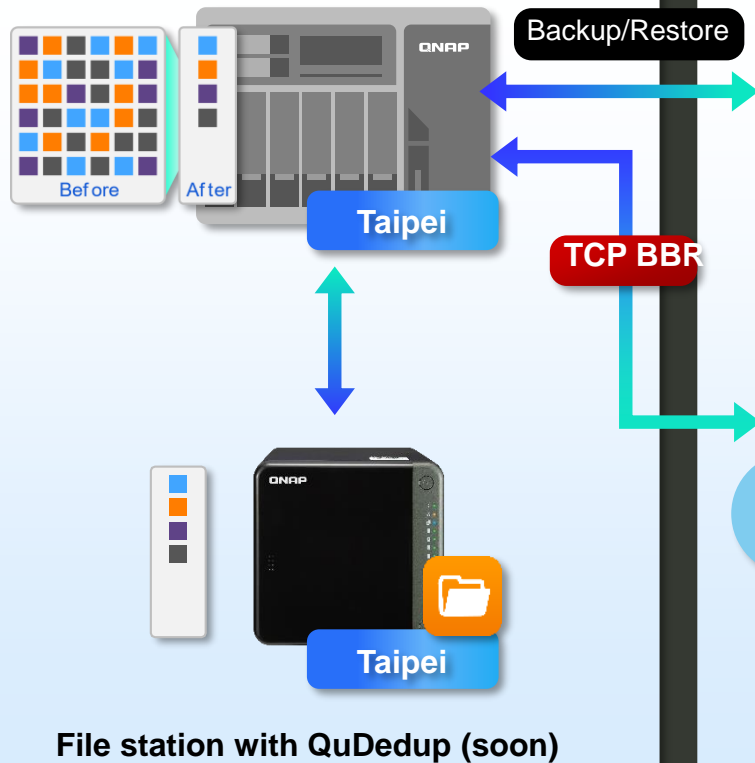


Backup data with deduplication

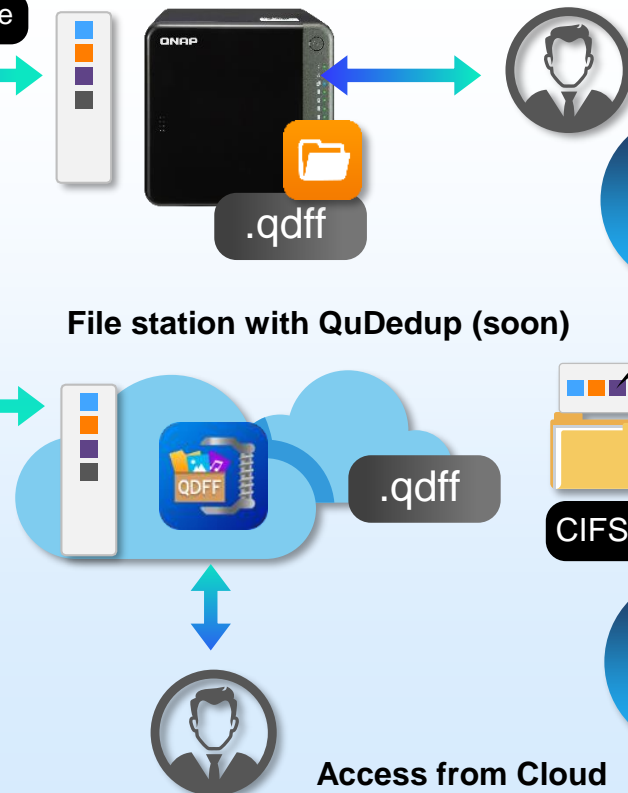


HBS 3 (Hybrid Backup Sync 3)

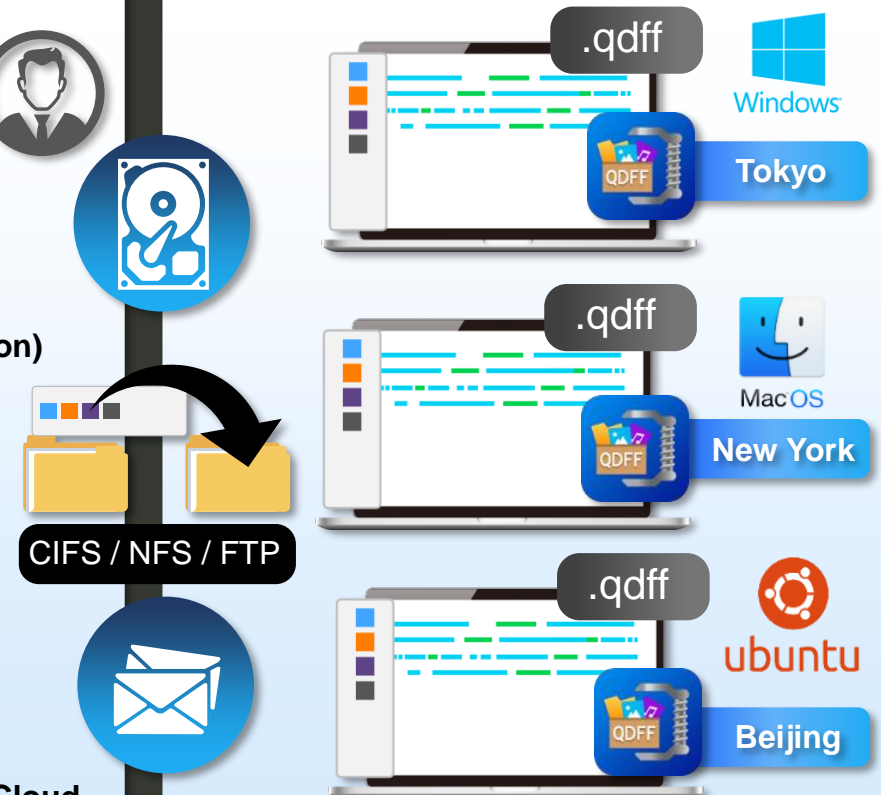
From local NAS
(via HBS 3)



From remote NAS
(via File Station)



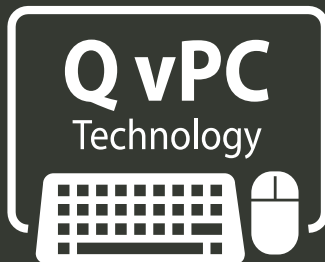
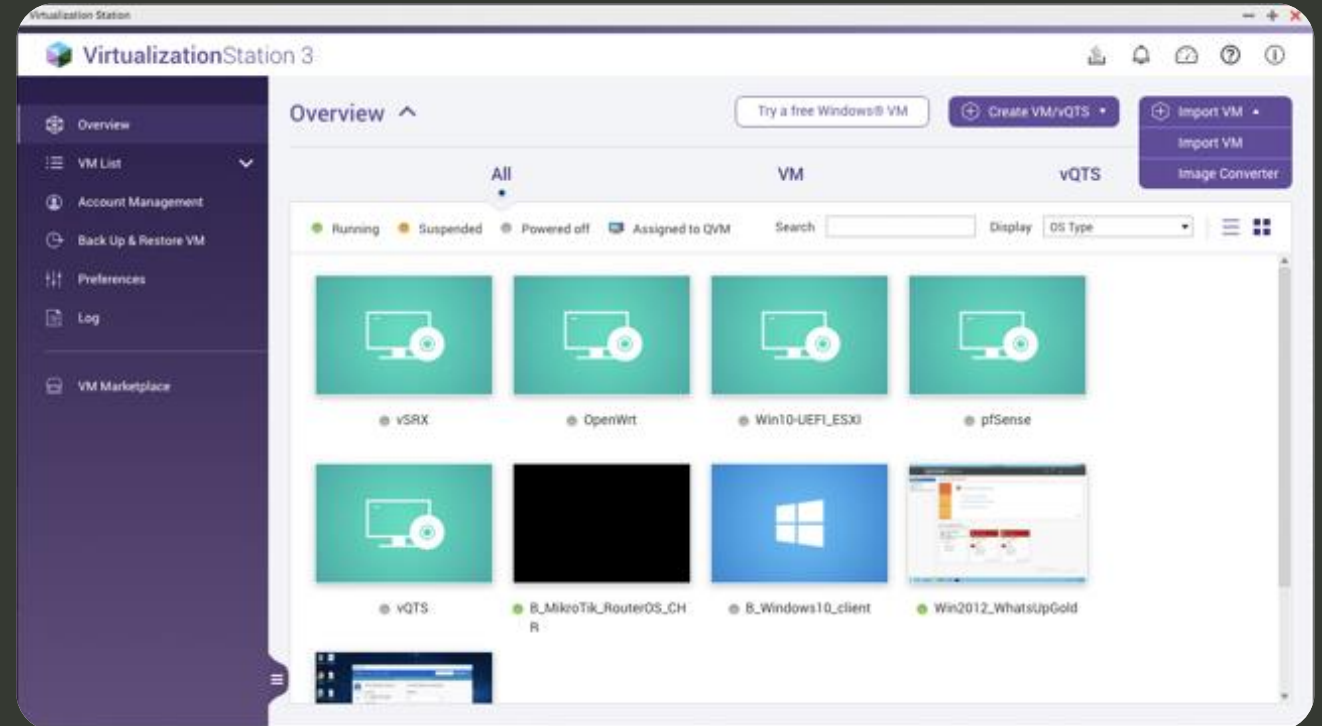
Carry and Use
(QuDedup Extract Tool)



Virtualization Station

With Virtualization Station, you can create multiple virtual machines to run various operating systems such as Windows, Linux, UNIX and Android on a QNAP NAS.

- Operate VM via **remote desktop** or **HDMI** output with a USB keyboard and a mouse
- VM Import/Export
- VM backup and snapshot
- Virtual switch: support multiple network modes
- Support USB device connection



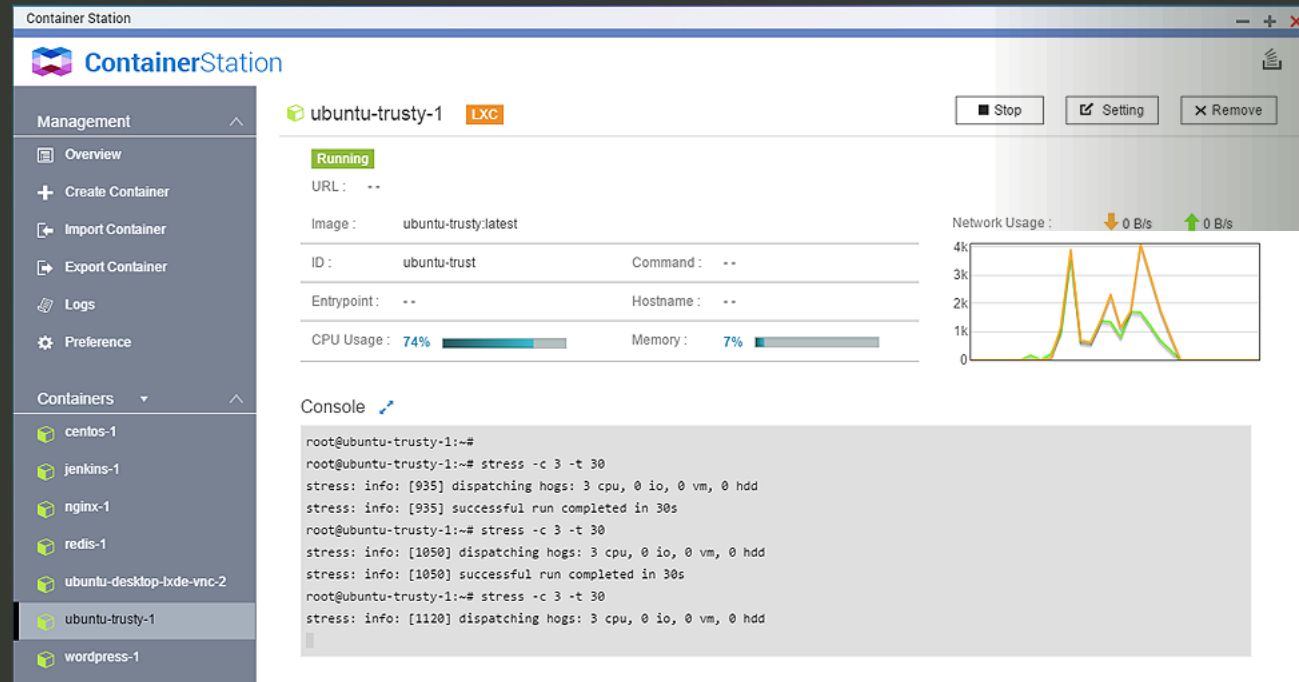
Go beyond your creativity with Container Station for a x86 Quad-core NAS with up to 8GB RAM

AI, IoT, Commonly-used Container Recommendation

- One-click installation wizard helps you quickly setup
- Supports Docker Compose YAML format to create applications

Easily import/export containers

- Imports images or containers from PC or NAS
- Exports images or containers to NAS as backup

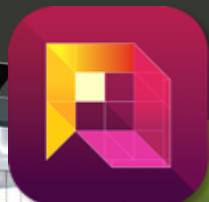


Built-in Docker Hub Marketplace

- Easily downloadable tools



● QVR Pro surveillance solution



QVR Pro

5,000+ compatible IP cameras

8 free camera channels

Expandable channels via license
TS-653D & TS-453D: max. 24 recommended
TS-253D: max. 16 recommended

QUSBCam2 for webcam recording



Surveillance Station 5.1

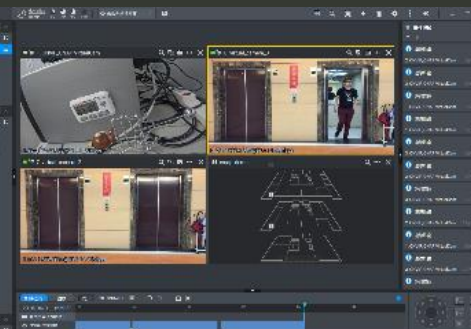
- 2 free channels
- 40 channels max. (optional license)

QVR Pro Client



Monitor feeds with iOS& Android mobile devices

NAS HDMI output with USB mouse/ keyboard control

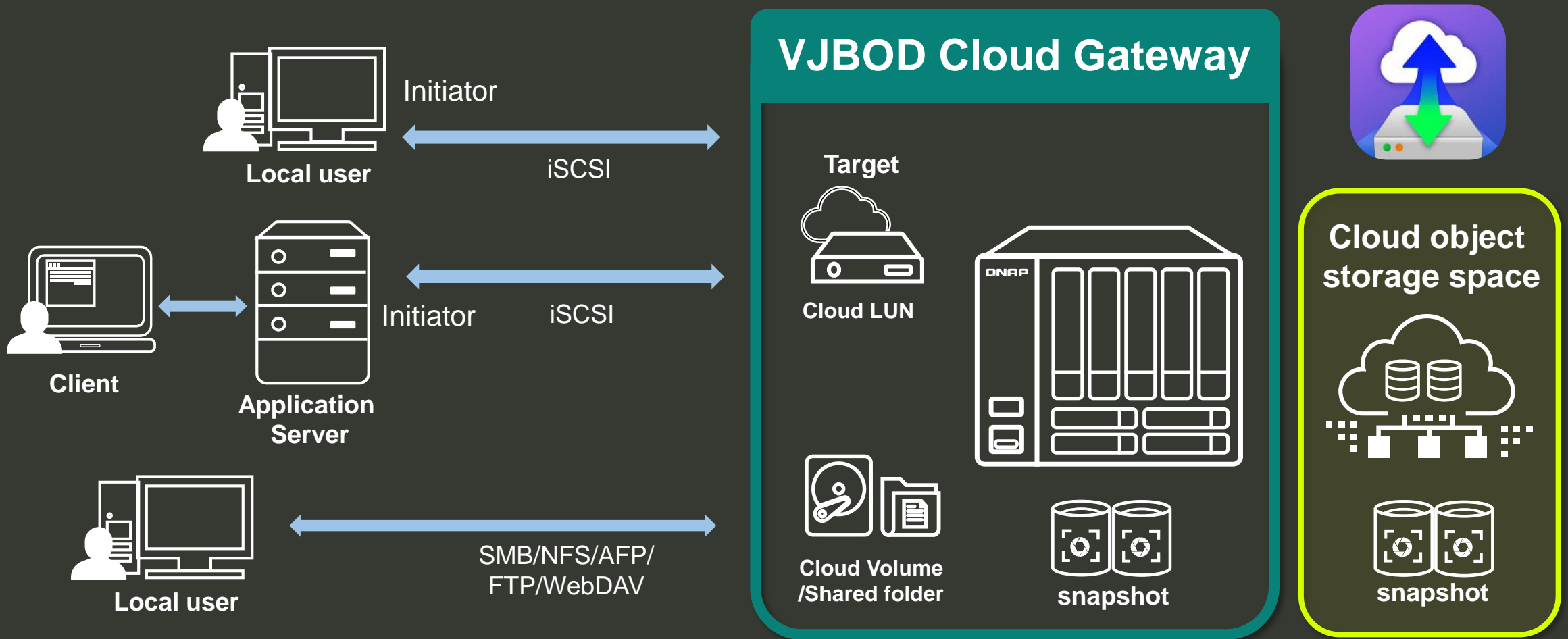




-
- The diagram illustrates the data flow and performance comparison between Internet and LAN for a NAS cache. It shows a cloud representing the Internet, a central NAS cache, and a laptop representing the LAN. Three numbered steps (1, 2, 3) are shown, each with a corresponding arrow indicating the direction of data flow. Step 1 shows a green arrow from the cloud to the NAS cache. Step 2 shows a blue arrow from the cloud to the NAS cache. Step 3 shows a pink arrow from the NAS cache to the cloud. A large blue arrow points from the NAS cache to the laptop, and a large pink arrow points from the laptop to the NAS cache. The Internet is labeled 'Slower' and the LAN is labeled 'Faster'. A circular inset shows a screenshot of a file system listing, highlighting the 'meta' directory.
- Internet**
Slower
- NAS cache**
- LAN**
Faster
- Meta data**
- | | File Name | Size | Access Time |
|----|-----------|------|-------------|
| 0 | meta | 1024 | 1000 |
| 1 | meta | 1024 | 1000 |
| 2 | meta | 1024 | 1000 |
| 3 | meta | 1024 | 1000 |
| 4 | meta | 1024 | 1000 |
| 5 | meta | 1024 | 1000 |
| 6 | meta | 1024 | 1000 |
| 7 | meta | 1024 | 1000 |
| 8 | meta | 1024 | 1000 |
| 9 | meta | 1024 | 1000 |
| 10 | meta | 1024 | 1000 |
| 11 | meta | 1024 | 1000 |
| 12 | meta | 1024 | 1000 |
| 13 | meta | 1024 | 1000 |
| 14 | meta | 1024 | 1000 |
| 15 | meta | 1024 | 1000 |
| 16 | meta | 1024 | 1000 |
| 17 | meta | 1024 | 1000 |
| 18 | meta | 1024 | 1000 |
| 19 | meta | 1024 | 1000 |
| 20 | meta | 1024 | 1000 |
| 21 | meta | 1024 | 1000 |
| 22 | meta | 1024 | 1000 |
| 23 | meta | 1024 | 1000 |
| 24 | meta | 1024 | 1000 |
| 25 | meta | 1024 | 1000 |
| 26 | meta | 1024 | 1000 |
| 27 | meta | 1024 | 1000 |
| 28 | meta | 1024 | 1000 |
| 29 | meta | 1024 | 1000 |
| 30 | meta | 1024 | 1000 |
| 31 | meta | 1024 | 1000 |
| 32 | meta | 1024 | 1000 |
| 33 | meta | 1024 | 1000 |
| 34 | meta | 1024 | 1000 |
| 35 | meta | 1024 | 1000 |
| 36 | meta | 1024 | 1000 |
| 37 | meta | 1024 | 1000 |
| 38 | meta | 1024 | 1000 |
| 39 | meta | 1024 | 1000 |
| 40 | meta | 1024 | 1000 |
| 41 | meta | 1024 | 1000 |
| 42 | meta | 1024 | 1000 |
| 43 | meta | 1024 | 1000 |
| 44 | meta | 1024 | 1000 |
| 45 | meta | 1024 | 1000 |
| 46 | meta | 1024 | 1000 |
| 47 | meta | 1024 | 1000 |
| 48 | meta | 1024 | 1000 |
| 49 | meta | 1024 | 1000 |
| 50 | meta | 1024 | 1000 |
| 51 | meta | 1024 | 1000 |
| 52 | meta | 1024 | 1000 |
| 53 | meta | 1024 | 1000 |
| 54 | meta | 1024 | 1000 |
| 55 | meta | 1024 | 1000 |
| 56 | meta | 1024 | 1000 |
| 57 | meta | 1024 | 1000 |
| 58 | meta | 1024 | 1000 |
| 59 | meta | 1024 | 1000 |
| 60 | meta | 1024 | 1000 |
| 61 | meta | 1024 | 1000 |
| 62 | meta | 1024 | 1000 |
| 63 | meta | 1024 | 1000 |
| 64 | meta | 1024 | 1000 |
| 65 | meta | 1024 | 1000 |
| 66 | meta | 1024 | 1000 |
| 67 | meta | 1024 | 1000 |
| 68 | meta | 1024 | 1000 |
| 69 | meta | 1024 | 1000 |
| 70 | meta | 1024 | 1000 |
| 71 | meta | 1024 | 1000 |
| 72 | meta | 1024 | 1000 |
| 73 | meta | 1024 | 1000 |
| 74 | meta | 1024 | 1000 |
| 75 | meta | 1024 | 1000 |
| 76 | meta | 1024 | 1000 |
| 77 | meta | 1024 | 1000 |
| 78 | meta | 1024 | 1000 |
| 79 | meta | 1024 | 1000 |
| 80 | meta | 1024 | 1000 |
| 81 | meta | 1024 | 1000 |
| 82 | meta | 1024 | 1000 |
| 83 | meta | 1024 | 1000 |
| 84 | meta | 1024 | 1000 |
| 85 | meta | 1024 | 1000 |
| 86 | meta | 1024 | 1000 |
| 87 | meta | 1024 | 1000 |
| 88 | meta | 1024 | 1000 |
| 89 | meta | 1024 | 1000 |
| 90 | meta | | |



Enterprise LUN backup: VJBOD Cloud block-based gateway



Follow the trend and choose a newer technology over the old eSATA

Popularity

Interface

Theoretical speed



eSATA

3 Gb/s
6 Gb/s



USB 3.2 Gen 1

5 Gb/s

USB 3.2 Gen 2

10 Gb/s

USB 3.2 Gen 2 x2

20 Gb/s



Thunderbolt 3

40 Gb/s



SAS 6Gb/s

48 Gb/s

SAS 12Gb/s

96 Gb/s

Economical and flexible QNAP expansion enclosures

QNAP TR RAID and TL JBOD enclosures have many advantages compared to the eSATA JBOD enclosures in the market for NAS capacity expansion.

- **Bigger capacity**
 - 2, 4, 8, 16-bay choices
 - NAS can support up to two expansion enclosures
- **Higher speed**
 - USB 3.2 Gen 1 5Gb/s, USB 3.2 Gen 2 10Gb/s or up to 64Gb/s with multiple miniSAS cables
- **Better compatibility: NAS or PC/server applications**
 - Expand NAS or PC/server storage capacity or data migration between different hosts
 - QNAP External RAID Manager and JBOD Manager for monitoring JBOD status

USB interface



SFF-8088 multiple SATA interface



* TS-x53D can be installed with a QNAP USB 3.2 Gen2 PCIe expansion card, which supports USB 3.2 Gen2 10Gbps. TS-253D PCIe slot supports Gen2 x4 = 16Gbps while TS-453D & TS-653D PCIe slot support PCIe Gen2 x2 = 8Gbps.

● QNAP TR RAID enclosure supports 2 modes on NAS

- TS-x53D supports up to two QNAP TR or TL enclosures.
- Internal mode with storage pool support or external mode with cross-platform compatibility with Windows/Mac computers.

Mode 1: Expanding the NAS with a new volume

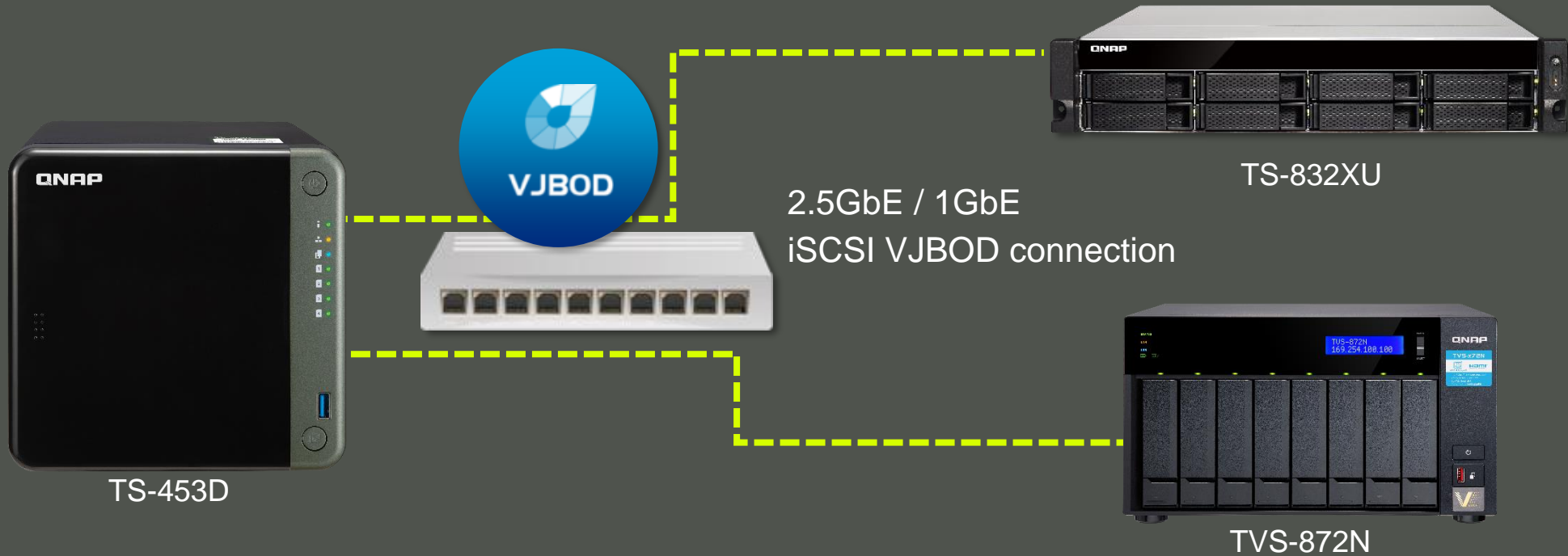


Mode 2: Work as a backup destination for snapshot replica






● Use Virtual JBOD to expand NAS capacity

Max. 8 VJBOD connections



● Future-proof 2.5GbE NAS saves money in the long run

Brand							Other vendor 2020 models	
Model	TS-253D		TS-453D		TS-653D		2-bay	4-bay
Processor	Intel x86 Celeron J4125 quad-core 2.0 GHz, burst up to 2.7 GHz							
RAM	4GB		4GB or 8GB				2GB	4GB
RAM slots	2 (max 8GB)						1 (max 6GB)	1 (max 8GB)
Networking	2 x 2.5GbE (Read 590 MB/s, Write 535 MB/s)						2 x 1GbE (Read 225.99 MB/s, Write 225.90 MB/s)	
HDMI	4K HDMI v2.0 60Hz						---	
PCIe slot	PCIe 2.0 x4		PCIe 2.0 x2				---	
USB	3 x USB 3.2 Gen 1 + 2 x USB 2.0						2 x USB 3.2 Gen 1	
M.2 SSD	2 x M.2 NVMe or SATA SSD via optional QNAP QM2 PCIe adapters						2 x M.2 NVMe SSD (expected to be Gen2 x1)	
10GbE/5GbE	10Gbe or 5GbE via optional QNAP QXG PCIe adapters						---	
Expansion	Up to 2 (or max 16 drives) USB 3.2 Gen 2 10Gb/s or multi-ch SATA TR & TL expansion enclosures						1 x (5 drives) eSATA 6Gb/s expansion enclosure	
Warranty	3-year limited hardware warranty							

TS-x53D

Maximize your NAS investment; every penny counts!

- Intel J4125 4-core 2.0 GHz, burst up to 2.7 GHz
- Built-in 2 x 2.5GbE for up to 590 MB/s read speed
- PCIe expansion slot for M.2 SSDs or 10GbE



TS-453D



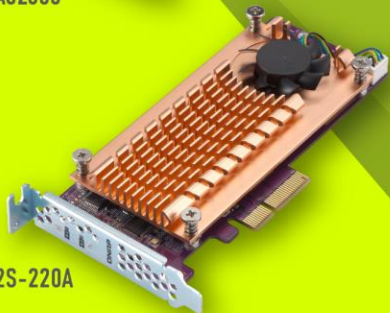
TS-653D



TS-253D



QWA-AC2600



QM2-2S-220A

