

QNAP

QNAP

①-②-③-④ ①-② ③ ④ ⑤ ⑥ ⑦ ⑧ ⑨ ⑩ ⑪ ⑫ ⑬ ⑭ ⑮ ⑯ ⑰ ⑱ ⑲ ⑳ ㉑ ㉒ ㉓ ㉔ ㉕ ㉖ ㉗ ㉘ ㉙ ㉚ ㉛ ㉜ ㉝ ㉞ ㉟ ㊱ ㊲ ㊳ ㊴ ㊵ ㊶ ㊷ ㊸ ㊹ ㊺ ㊻ ㊼ ㊽ ㊾ ㊿

TS-451DeU

Short-depth 1U NAS

Intel dual-core NAS

Featuring dual M.2 SATA SSD slots and two 2.5GbE ports

J4025
2.0 GHz, max 2.9 GHz



OVERVIEW

- The beginning of the 2.5GbE wave: the affordable TS-451DeU with extensive hardware features
- TS-451DeU for high performance backup and business applications
- Parts upgrade and performance demo

TS-451DeU

Short-depth 1U NAS



Time to upgrade the old Gigabit network to match the rising Wi-Fi 6 (802.11ax)

With the release of Wi-Fi 6 (802.11ax) routers, and their 160MHz large bandwidth throughput and higher wireless performance, it is inevitable to upgrade the Gigabit wired speed to 2.5GbE or higher in businesses!

QNAP 10G switches supporting 2.5GbE



QSW-308-1C



QSW-1208-8C



QSW-804-4C

Keep existing wiring for 2.5GbE

	CAT 5e	CAT 6	CAT 6A
100M	✓	✓	✓
1G	✓	✓	✓
2.5G	✓	✓	✓
5G	✓	✓	✓
10G	X	✓ (55m)	✓

Affordable and fast storage for start-ups

Dual-core J4025

2.0 GHz base

2.9 GHz burst

Intel UHD Graphics 600 integrated

250 MHz base

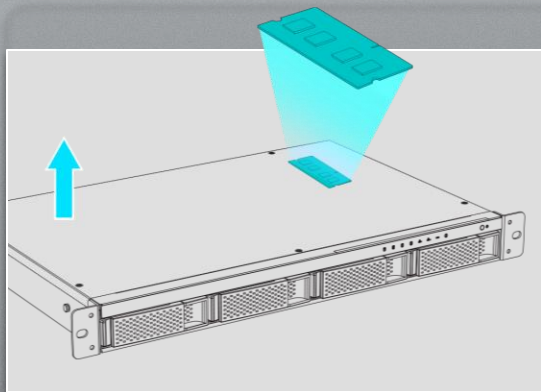
750 MHz burst



TS-451DeU

Short-depth 1U NAS

Upgrade to max. 8GB memory



* Requiring removing some screws on the top cover

2 x DDR4 SO-DIMM
Dual-channel, max **8 GB** total

TS-451DeU-2G

2GB RAM (1 x 2GB)



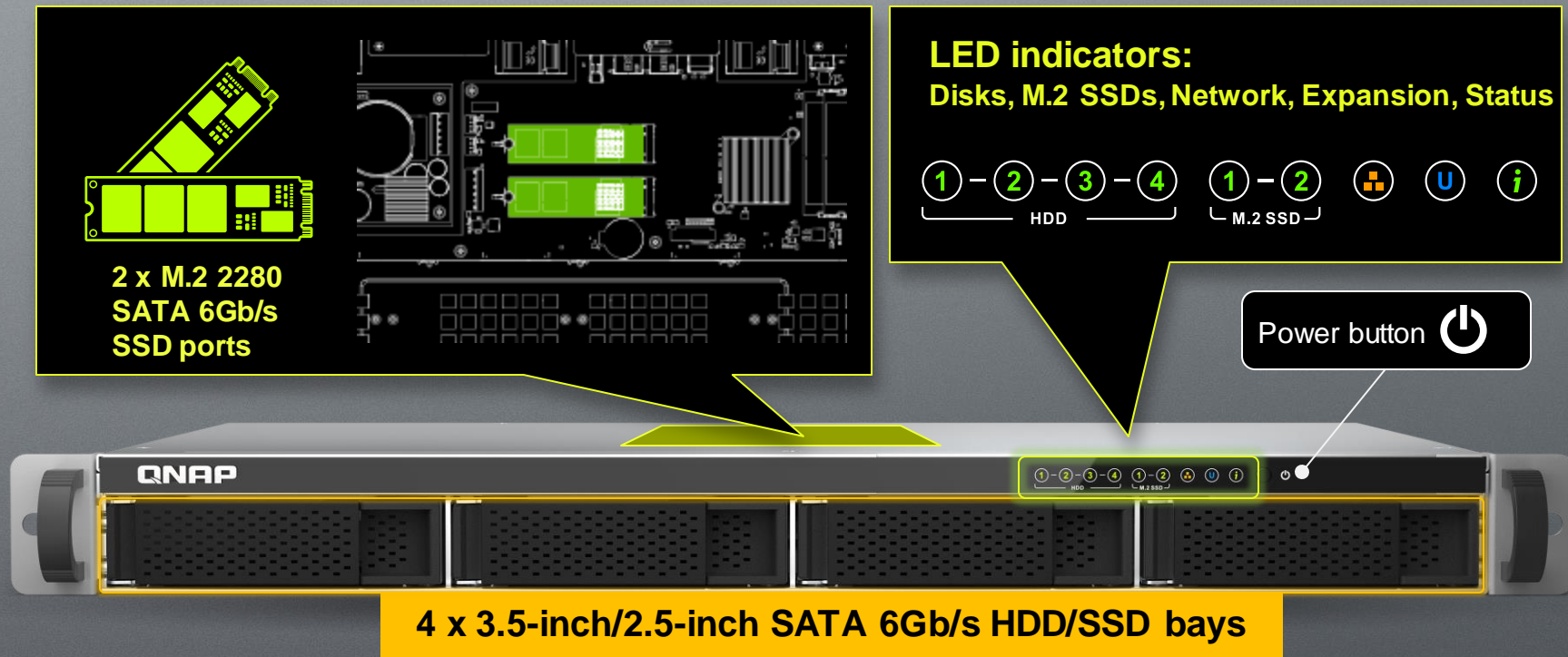
Ordering information :

4GB: RAM-4GDR4A0-SO-2400

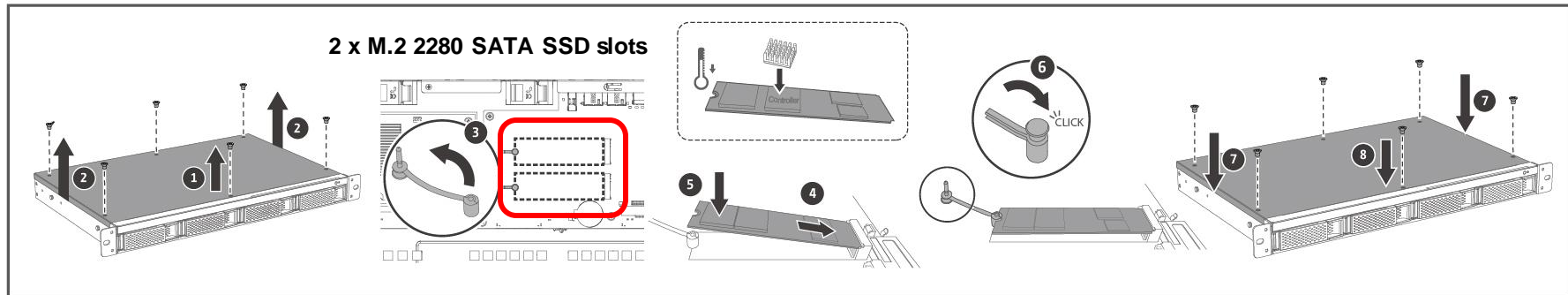
2GB: RAM-2GDR4T0-SO-2400



1U rackmount NAS for Qtier & SSD Cache



Dual M.2 2280 SATA SSD slots for performance enhancement



Choice 1: SSD cache
Improves random access performance

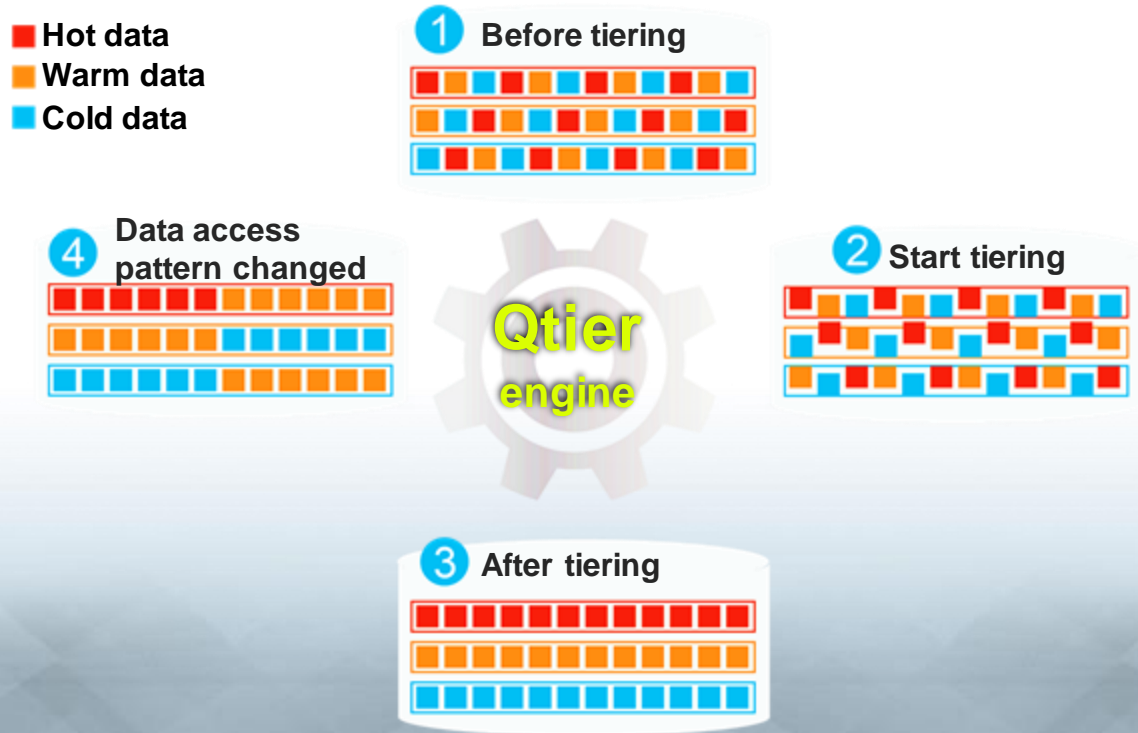


Choice 2: Qtier
Performance and capacity benefits

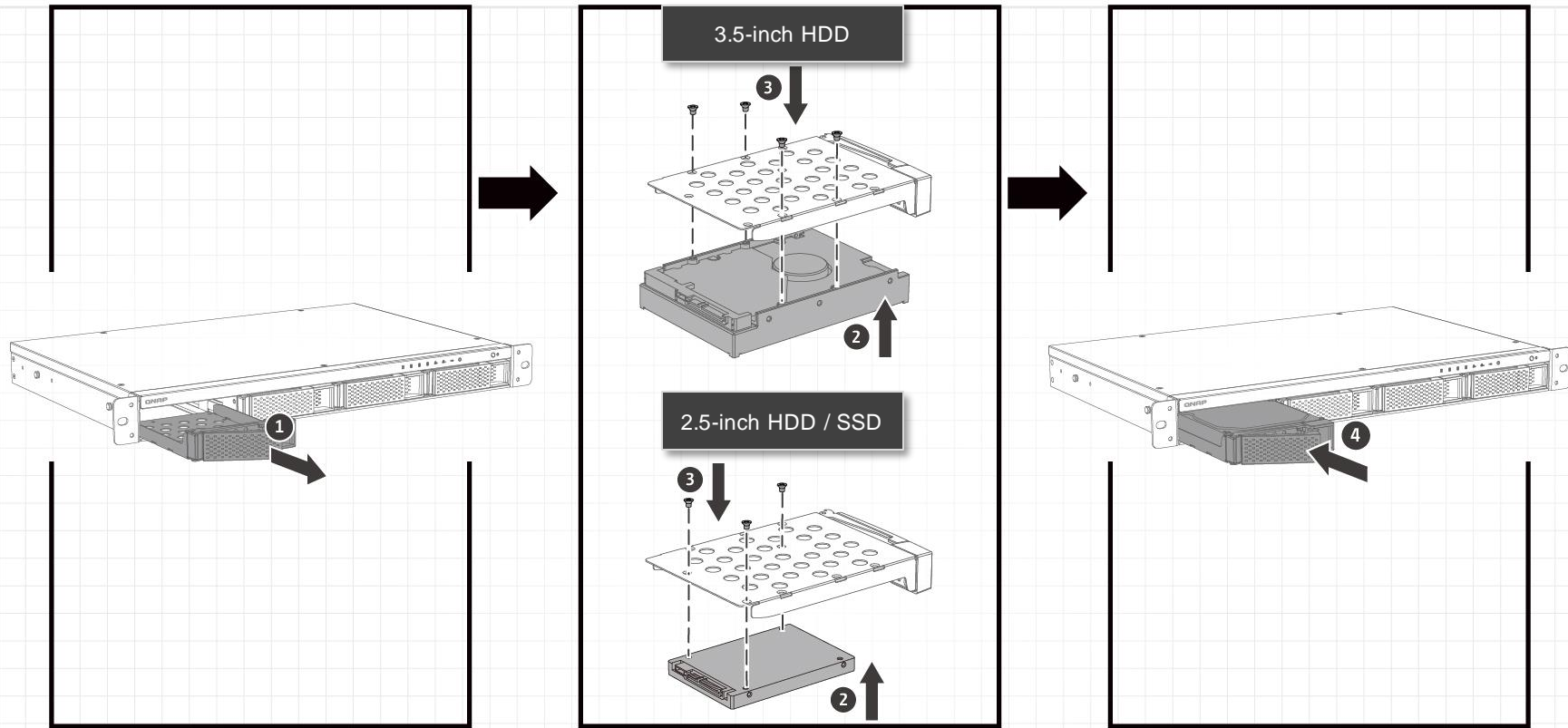


Qtier (Auto-Tiering) combines performance & capacity

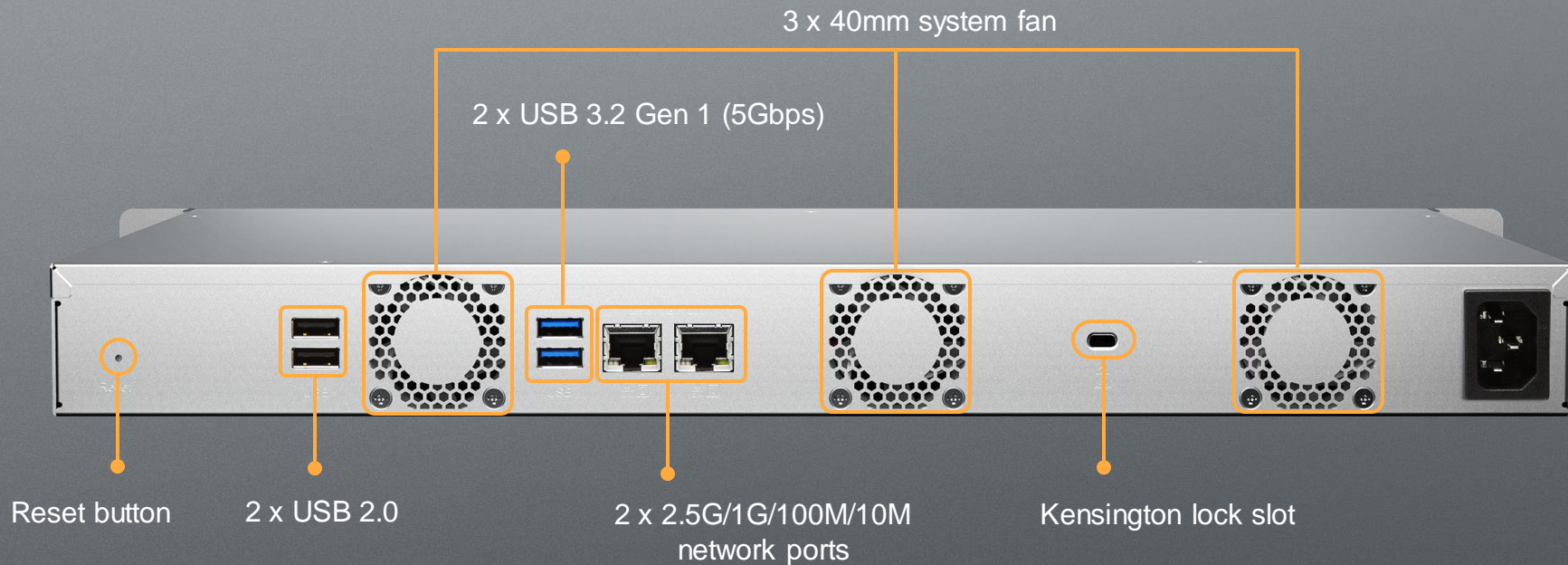
- QNAP NAS allows the combination of SSD and HDD RAID into the same pool and migrate data automatically based on accessing pattern.
- Provide higher capacity as SSDs can be used to store data



Easy to install HDD/SSD with hot-swappable design



Multiple USB ports for disks, UPS and other peripherals



Flexibly deployable short-depth chassis TS-451DeU

**12-inch depth,
40% less than traditional chassis**

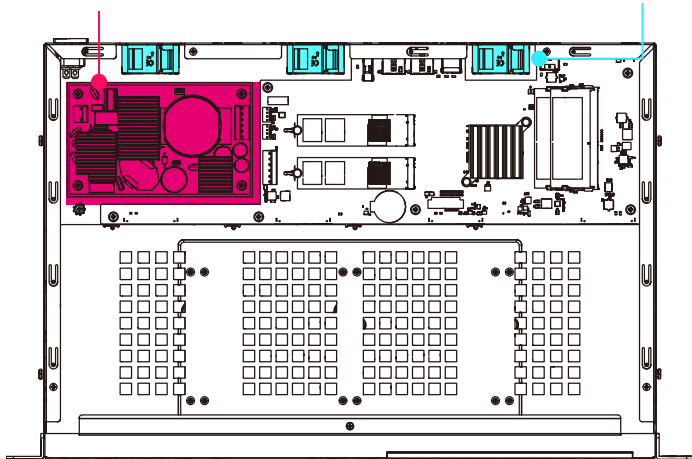
**Compatible with
standard ANSI/EIA-RS-
310-D 19-inch rack
With optional
RAIL-B02 Rail Kits**



Environmentally friendly design

100W open frame, noise-reduced, fanless PSU

Three 40mm quiet system fans



Power consumption

In operation

28.02W

33.72W*

HDD sleep

13.18 W

21.3W*

*(1U server reference)

Noise level

21.6 dB(A)

37.7 dB (A)*

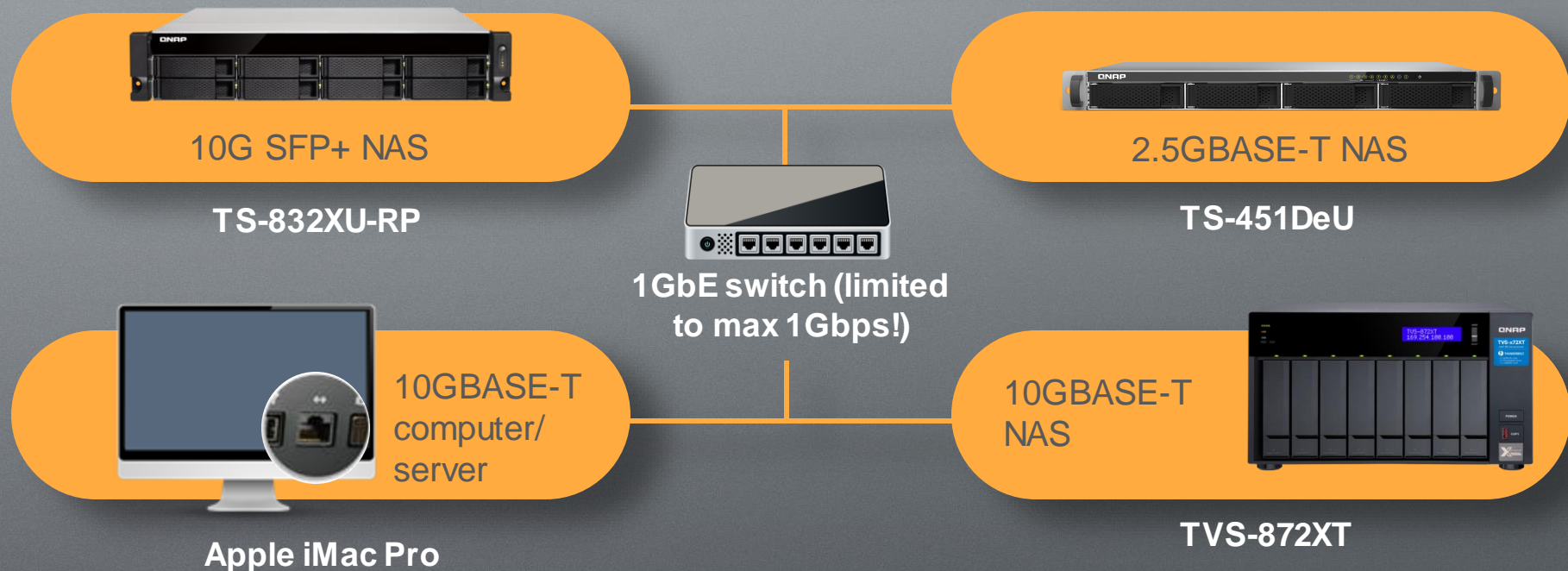
*(1U server reference)

■ Power consumption is measured when fully loaded with 1TB NAS drives

■ Noise level test environment:

Refer to ISO 7779 ; Maximum HDD loaded ; Bystander Position ; Average data from 1 meter in front of operating NAS.(Using TS-453BU as reference of 1U single-PSU rackmount server)

Don't let the switch slow down your entire network



Rule #1: Get a fast NAS with 2.5GbE+

2x
2.5GbE

476 MB/s

436 MB/s

1x
2.5GbE

274 MB/s

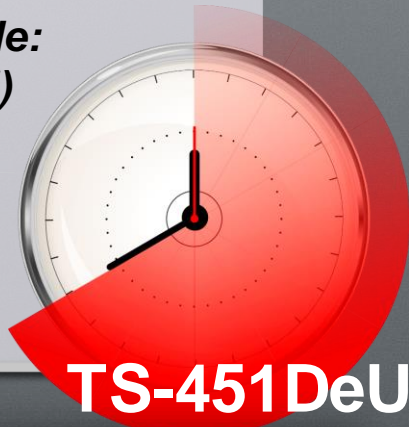
273 MB/s

1x
1 GbE

112 MB/s

112 MB/s

*Transfer a 10GB file:
23 sec (2 x 2.5GbE)
v.s.
89 sec (1 x 1GbE)
reduces **75%**
backup time!*



TS-451DeU

Tested in QNAP Labs. Figures may vary by environment.

NAS: TS-451DeU-2G
OS: QTS 4.4.2, MTU-9000
Disks: Qtiier, RAID 5: 4 x Seagate 1TB ES.3 HDD +
RAID 1: 2 x Samsung 1TB M.2 860 EVO SSD
Client PC: Intel® Core TM i7-6700 3.40GHz CPU;
32GB RAM; Intel X550 NIC, MTU-9000; Windows® 10
Pro
Iometer SMB sequential throughput: 3 minutes / 2
workers / 64 outstanding / 30 sec ramp up time



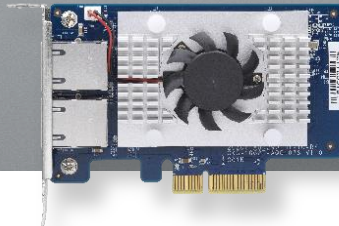
Rule #2-1: Upgrade the computers and servers with a PCIe NIC

Support 10G/5G/2.5G/1G/100M Multi-Gig



QXG-10G1T

- Marvell AQC107
- 1 x 10GbE NBASE-T
- PCIe Gen3 x8
- Low Profile



QXG-10G2T-107

- Marvell AQC107S
- 2 x 10GbE NBASE-T
- PCIe Gen3 x8
- Low Profile



10GbE

Support 5G/2.5G/1G/100M Multi-Gig

QXG-5G1T-111C
QXG-5G2T-111C
QXG-5G4T-111C

- Marvell AQC111C
- 1/2/4 x 5GbE NBASE-T
- PCIe Gen2 x1, Gen3 x2, Gen3 x4
- Low Profile



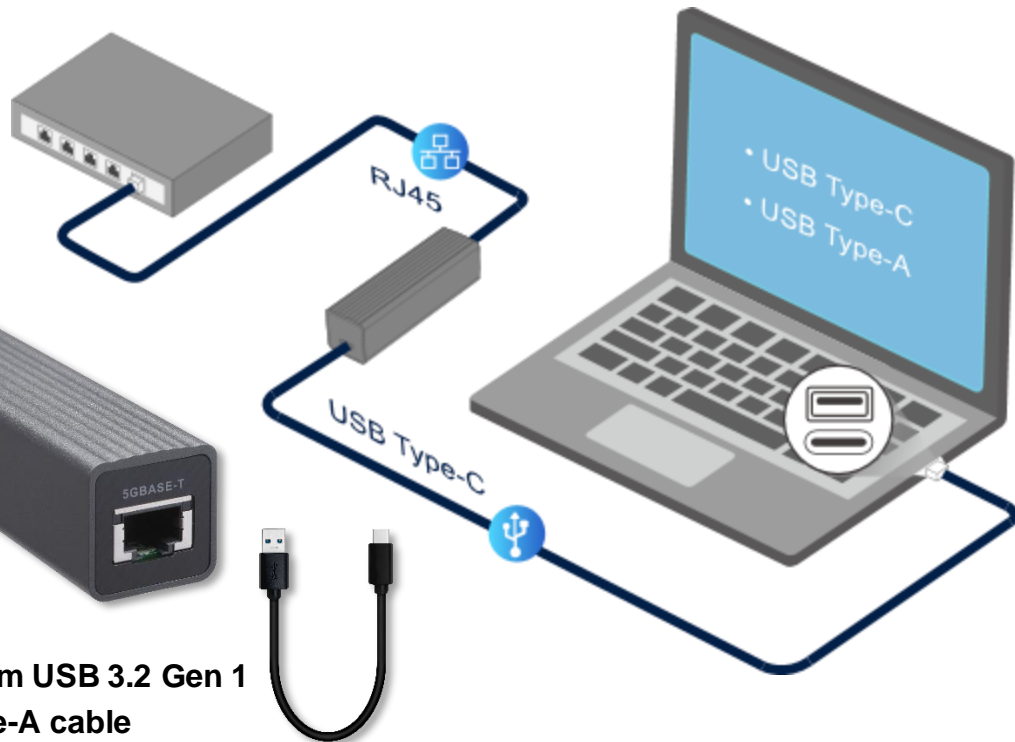
5GbE

Rule #2-2: Upgrade computer network speed with a USB 3.2 Gen 1 adapter

QNAP QNA-UC5G1T:
USB 3.2 Gen 1 Type-C to
5G/2.5G/1G/100M network adapter



**Includes a 20cm USB 3.2 Gen 1
Type-C to Type-A cable**



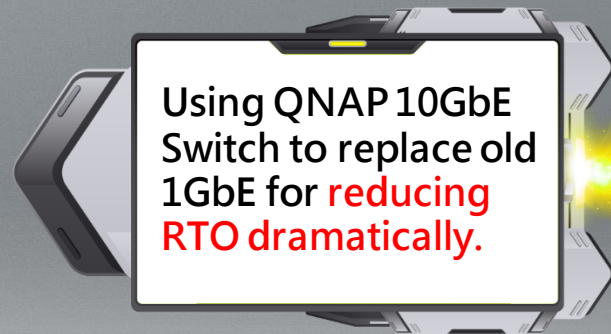
Rule #3: Future-proof your network by upgrading to a Multi-Gig switch



	QSW-308-1C	QSW-1208-8C	QSW-804-4C
RJ45 1G	8	-	-
RJ45 10G/5G/2.5G/1G/100M	1 (Combo port)	8 (Combo port)	4 (Combo port)
SFP+ 10G	3	12	8
Dimensions	290 x 50 x 42.5 mm (11.4 x 2.0 x 16.7 in)	285 x 43 x 233 mm (11.2x 1.7 x 9.2 in)	
Net Weight:	820g	2150g	2100g
Power	AC adapter, 36W, 100 - 240V	AC adapter, 50W, 100 - 240V	AC adapter, 41W, 100 - 240V
Operating temperature	0°C to 40°C (32°F to 104°F)	0°C to 40°C (32°F to 104°F)	
Fan	Fan less design	2 x 4cm fan (12V DC)	
Management Type	Unmanaged switch	Unmanaged switch	

Use 2.5GbE to reduce backup & recovery time

- The Remote Snapshot Vault Recovering is based on the Ethernet service.
- Using 1GbE network, recovering large data still takes hours.
- Pair the Snapshot Replica Solution with 2.5GbE interfaces to increase both the backup and recovery speed!



Qsync for teamwork and productivity improvements

- Windows/Mac/Linux Qsync synchronization utilities
- Use Qsync mobile app to access the data anytime, anywhere
- Central Management Mode & User Customization Mode
- Version control with up to 64 versions for data recovery
- Administrators can erase the data on remote devices when a linked device is stolen

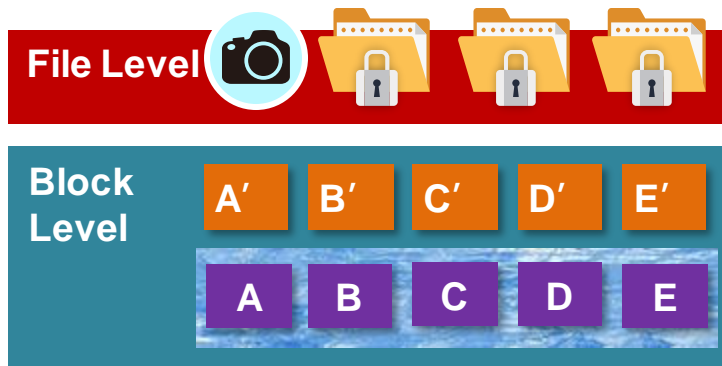


Up to 1024 snapshots for file recovery

1. Fully supports all storage configurations at the storage pool level.
2. Easily take, manage and restore snapshots.
3. Using the ext4 file system for "out of volume" snapshots

RAM Size	Maximum Total Snapshot Number	Maximum Snapshot Number per Volume/LUN
2GB	64	32
4GB and more	1024	256

- Ransomware cannot overwrite snapshots which are stored out of volume.



Mac Time Machine backup



Create the NAS backup job

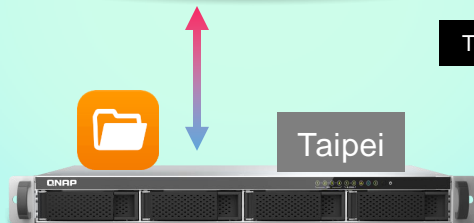
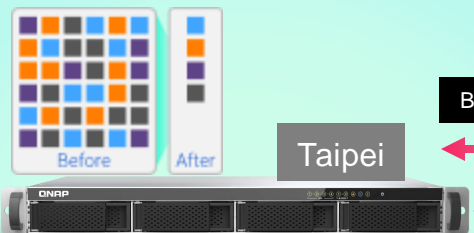


Backup data with deduplication



HBS 3 (Hybrid Backup Sync 3)

From local NAS (via HBS 3)

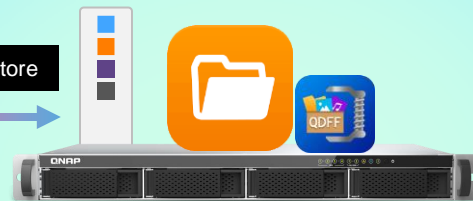


File Station with QuDedup (soon)

From remote NAS (via File Station)

Backup/Restore

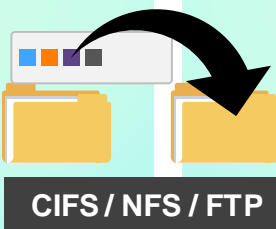
TCP BBR



File Station with QuDedup (soon)



Access from the cloud



CIFS / NFS / FTP

Carry and use (QuDedup Extract Tool)



Windows

Tokyo



Mac OS

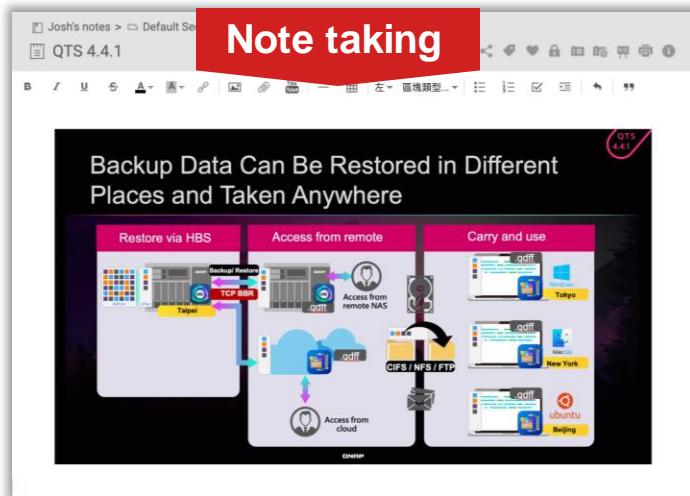
NYC



ubuntu

London

Enhance efficiency with online collaboration



Notes
Station 3



Link



Image



Table



Rotate/
Flip



Pixilation



Cut



Chrome
extension



Attachment



YouTube



Checklist



Text



Shapes

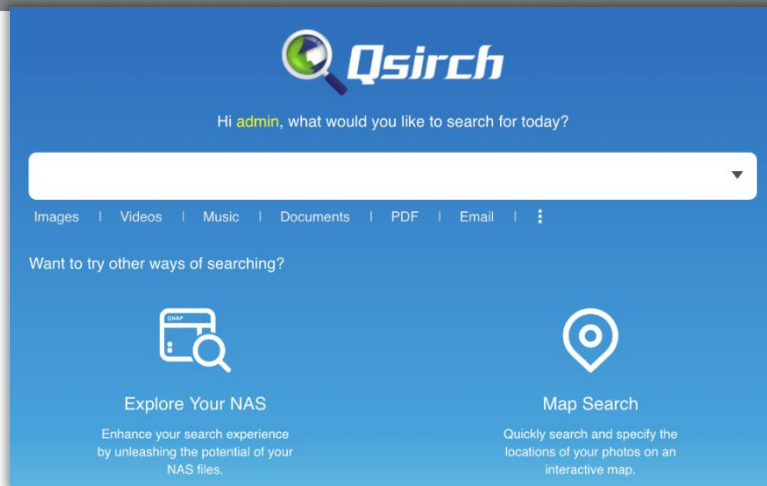


Draw
tool



Mobile app

Qsirch 4.0 makes it easy to search files



- Search within NAS and on the Internet
- Large file preview window
- Advanced search for complex keyword search
- 35+ powerful filter conditions
- Easy steps from previewing to sharing



QNAP VPN and QBelt VPN protocol



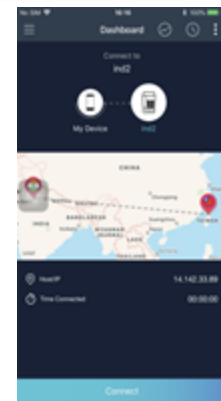
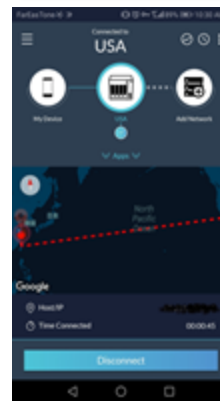
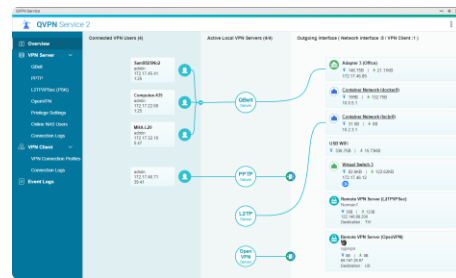
Secure Encrypted Connection:
DTLS + SSL + AES-256 encryption



New QBelt protocol:
Decreases the chance of being detected



Works on many desktop and mobile devices



QVR Pro surveillance solution



For NAS with 4GB RAM or more

5,000+ compatible IP cameras

8 free camera channels

30 channels max. (optional license)

QUSBCam2 for webcam recording

For NAS with 2GB RAM



Surveillance Station 5.1

- **2 free channels**
- **32 channels max. (optional license)**

Rackmount NAS for multimedia streaming



Use Cinema28 for multi-room streaming



Use Plex server to stream or transcode media files



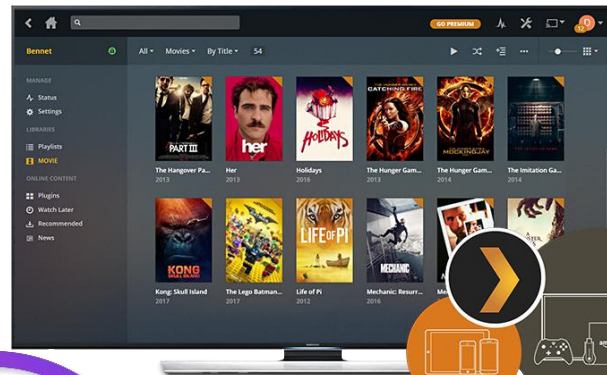
Use Qmedia app on Apple TV/Fire TV/Roku/Android TV



QuMagie AI smart albums for object/face classification



Integrated GPU for max 2-ch 4K video transcoding



Use Virtual JBOD to expand NAS capacity

Max 8 VJBOD connections



TS-451DeU



QSW-1208-8C

2.5GbE
iSCSI VJBOD
connections



TS-1263XU-RP



TVS-672N

QNAP TR USB RAID & TL USB JBOD support 2 modes on NAS

- TS-451DeU supports maximum two QNAP TR RAID enclosures or one TL-R1200C-RP USB JBOD enclosure.
- Internal mode with storage pool support or external mode with cross-platform compatibility with Windows/Mac computers.

Mode 1: Expanding the NAS with new volume



TR-004U



TL-R1200C-RP



TS-451DeU



Mode 2: Work as backup destination for snapshot replica



TR-004U



TL-R1200C-RP

- Upgrade RAM & M.2 SATA SSD
- 2.5GbE performance test



RAM modules :

4GB: RAM-4GDR4A0-SO-2400

2GB: RAM-2GDR4A0-SO-2400

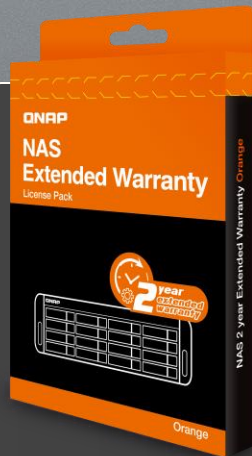
Live Demo



Up to 5 years of warranty option available

3-year standard warranty + 2-year extended warranty = 5 years of warranty

<https://www.qnap.com/service/product-warranty/>



Ordering P/N:
LIC-NAS-EXTW-ORANGE-2Y

Extended Warranty (optional)

- Extending your warranty, available within **90 days** of the initial unit purchase.
- Offers identical service to standard warranty.



Standard Warranty

- Warranty service that comes in effect at the time of purchase.
- **Free** repair and part replacement for products under normal use during warranty period. (Spare parts and consumables are excluded)

QNAP



TS-451DeU

2 x 2.5GbE, 4 x 3.5"/2.5" SATA + 2 x M.2 2280 SATA

Copyright© 2020 QNAP Systems, Inc. All rights reserved. QNAP® and other names of QNAP Products are proprietary marks or registered trademarks of QNAP Systems, Inc. Other products and company names mentioned herein are trademarks of their respective holders.

J4025
2.0 GHz, max 2.9 GHz

